

Madrigal & Co. (post-1945)

Vicente Madrigal (d. June 1972)

Madrigal & Co.

Madrigal Shipping Co. Inc. (1946)

Cia Globo de Nav. S.A., Panama (1952)

Caribbean & St Lawrence Navigation Co., S.A. (1955)

Pacific Trading & Navigation Ltd (1959)

Pac Trade Nav. Co. (1967)

A.P. Madrigal Shipping Co. Inc. (c.1979)

A.P. Madrigal Steamships Co. Inc. (c.1981)

Madrigal Transport Inc. (1996)

Trans Pacific Lines Ltd (2000)

ILLUSTRATED FLEET LIST

By Stephen Kentwell & Howard Dick

All Rights Reserved 2019, 2022

May be cited with acknowledgement to www.oldchinaships.com

skentwell@hotmail.com

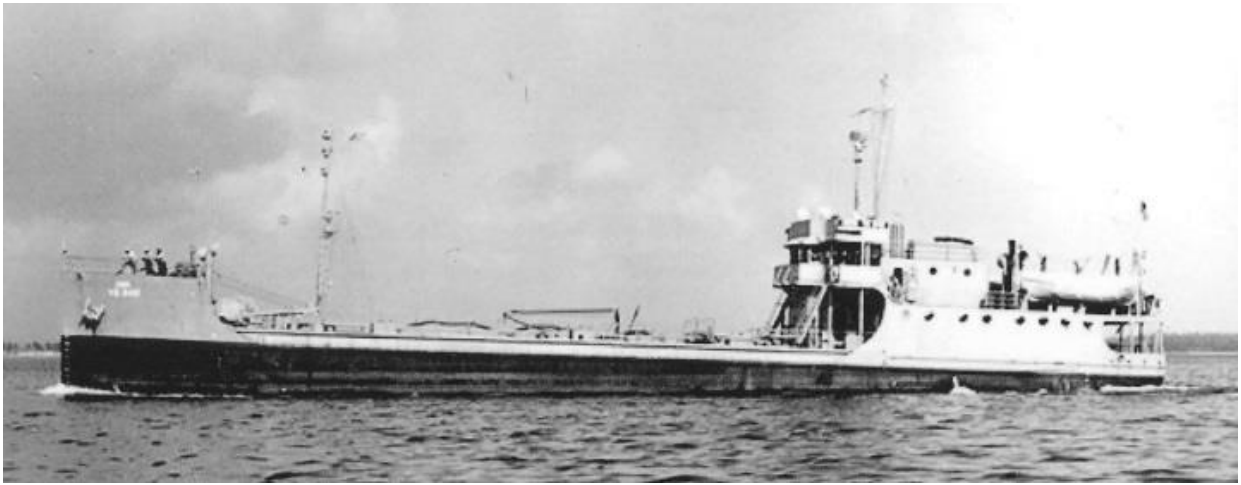
h.dick@unimelb.edu.au

We gratefully acknowledge assistance, from Bill Schell who has furnished many photographs from his collection and assisted with ship histories, from Peter Cundall and from the Miramar site.

This updated edition published 23 December 2023

CETUS (ii) (1946-55) 633/43 ('YO' tkr) 180' design

Built by Odenbach S.B. Corp., Rochester (#10), for US Army as Y-10. Sold 1946 to Madrigal Shg Co. Inc. as CETUS. Rebuilt to general cargo date (738 grt). By 4/52 sailing Adlay-Manila. 11/52 customs violation. 25/11/55 holed and rudder disabled at mouth of fast flowing Cagayan River under control of 3 pilots on voyage Manila-Aparri. 26/11/55 at 3 am following jettisoning of sawn timber cargo foundered out of control in heavy seas off Linao Point, Cagayan, 14 rescued, 5 dead, 15 missing.



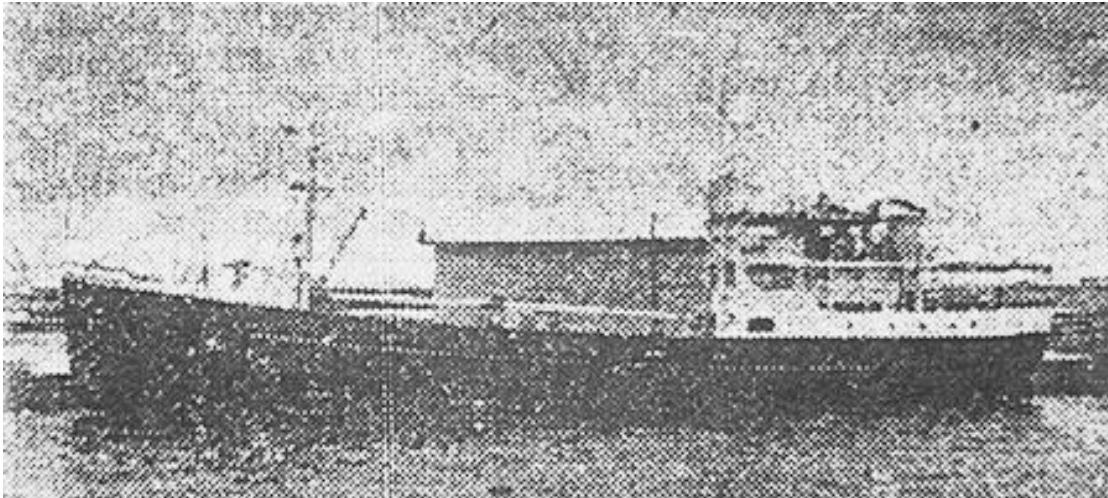
Illustrated is YO-142, a sister of Y-10 /CETUS above and Y-4 below (Navsource).

Y-4 (1946-55) 633/43 ('YO' tkr, 180' design)

Built by Odenbach S.B. Corp., Rochester (#4), for US Army as Y-4. 1946 sold to Madrigal Shg Co. Inc. 3/55 scrapped at Hong Kong by Wing Tak Ltd.

Y-35 (i) (1946-57) 484/44 ('Y' tkr, 162' design)

Built by Kyle & Co. Inc., Stockton (Ca) (#22) for US Army as Y-35. 1946 sold to Madrigal Shg Co. Inc. 1953 r. ZEUS. 6/53 maiden voyage Manila-Salomaague-Aparri. 7/53 sailing Calicoan-Guiuan-Tacloban. 11/53 operating Manila-Iloilo-Pulupandan. Early-1957 sold to North Camarines Lumber Co. and by 3/57 in service. 1/60 advertised for South Sea Shg Line, not subsequently, but likely to have become CONCEPCION of Madrigal, 23/5/70 still in service at Manila. LR78 still listed. NFI. [*Photo Manila Times 10/6/53, 11/53 described as ss. Photo in Manila Times 8/4/54, described as ms*].



ZEUS as illustrated in The Manila Times of 10/6/53



CONCEPCION at Manila 23 May 1970 (W. Schell).

Y-45 (1946-66) 484/44 ('Y' tkr, 162' design)

Built by Kyle & Co. Inc., Stockton (Ca) (#42) for US Army as Y-45. 1946 sold to Madrigal Shg Co. Inc. 1966 sold to Luzon Stevedoring Corp., Manila r. LSCO BALINTAWAK. Later transferred to Commander Shipping Corp., Manila. RLR 1990.



Y-13 was a sister of Y-45 (Navsource).

REGULUS (1947-49) 795/38

Built by N.V. Schpsw. Gebr. vd Werf, Deest for Brook Shg Co. Ltd (Comben Longstaff & Co. Ltd mgrs), London as ENIDTOWN. 1939 sold to Manila S.S. Co. Inc. r. ANAKAN. Between 27/12 and 2/1/42 scuttled in Pasig River - raised and recomm. as ANAN MARU. 1945 recovered and reverted to owners. 1947 sold to M&Co. on stranding of TRISTAN, r. REGULUS. 11/8/47 first advertised voyage Manila-N. Luzon ports. 12/1/49 beached at Hong Kong following fire in cork cargo (insulation?) while refitting. 5/49 switched from Manila-Aparri route to Manila-Iloilo service. 19/6/49 r. REGULUS, reverted to Aparri route. 2/11/49 on voyage Zamboanga-Manila with coal foundered off coast of San Jose, Antique during typhoon, only one survivor from crew of 33/4 pass.

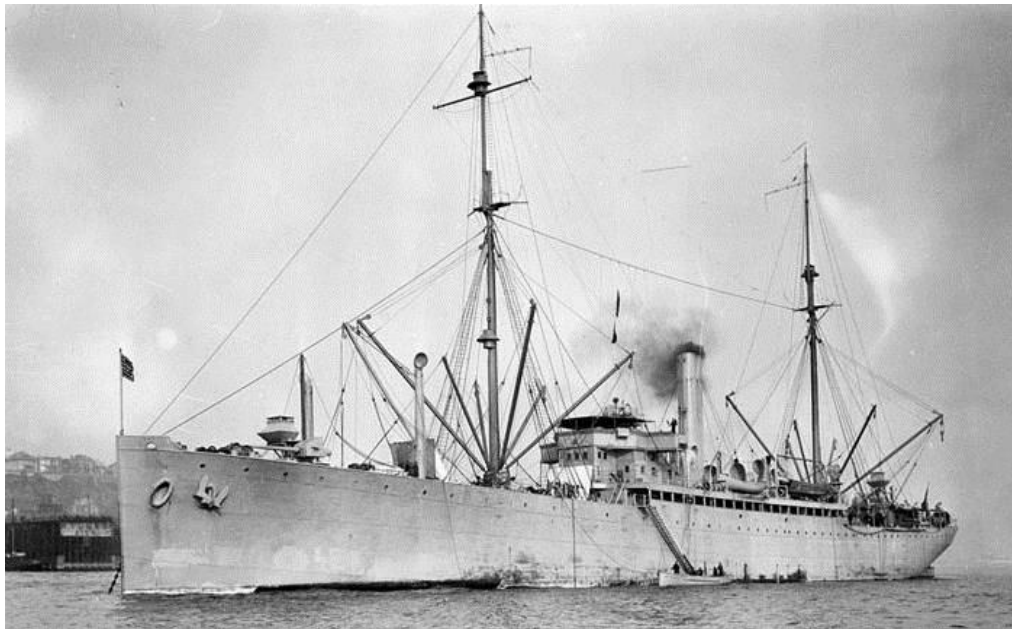


Launch of ENIDTOWN (Peter Cundall colln.)

REGULUS (P. Herald 25/2/49).

DON JOSE (iv) (1948-53) 6245/16

Built by U.S. Navy Yard, Boston for USN as storeship USS BRIDGE (AF1). 1948 sold to Madrigal Shg Co. Inc. r. DON JOSE. 4/10/48 first reported arrival Manila from Bangkok with rice. 2/49 sailing San Francisco-Pusan-Manila on charter to US Army to supply US forces in Korea. 30/10/49 due Manila with rice from Guayaquil, Ecuador. 9/3/51 seriously damaged by fire, flooded while alongside Pier 11, Manila. 15/11/52 when disabled 3478 miles out of Cebu en route to Los Angeles, master and chief engineer leave vessel and return to Manila. 3/53 arrived for breaking at Hikari, Japan in former Moji Naval Yard, work beginning 1/7/53.



USS BRIDGE (Wikipedia).

SUSANA (1948-63) 6157/20

Built by Chickasaw S.B. & Car Co., Chickasaw (#4) for United States Steel Products Co. Inc., New York as ENSLEY CITY. 1931 sold to Isthmian Steamship Co. Inc., New York. 1946 sold to De La Rama S.S. Co. Inc. r. ESCALANTE. 1948 sold to Madrigal Shg Co. Inc. r. SUSANA. 11/56 first Philippine-flag vessel to visit Hamburg. 8/58 (now Panamanian-flag) arrived Manila with rice from Burma. 11/12/63 at Hirao for demolition, work beginning 22/2/64.



SUSANA at Victoria, BC, 1952 (W. Schell colln).

LEPUS (1949-56) 2294/11

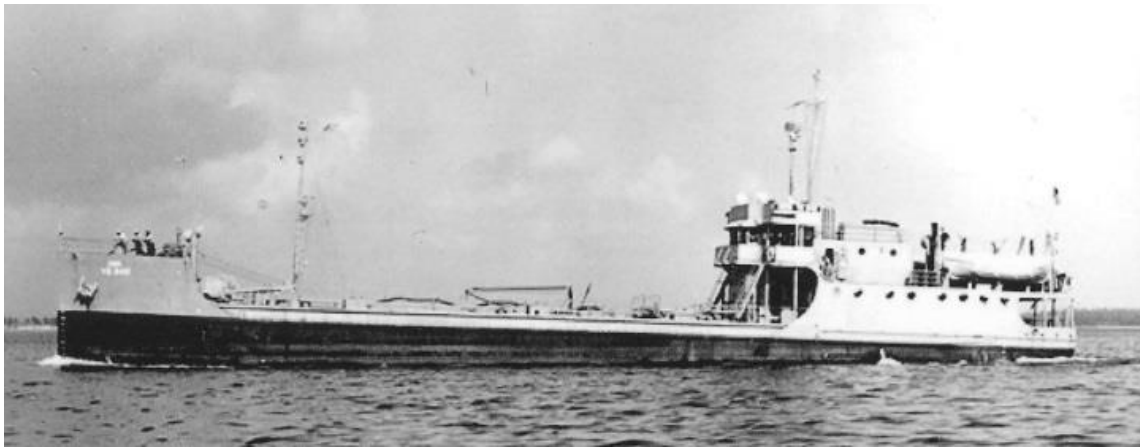
see TRISTAN (1941-49)

REGULUS (1949-49) 795/38

see ANAKAN (1947-49)

TAURUS (ii) (1949-c.67) 633/43 ('YO' tkr)

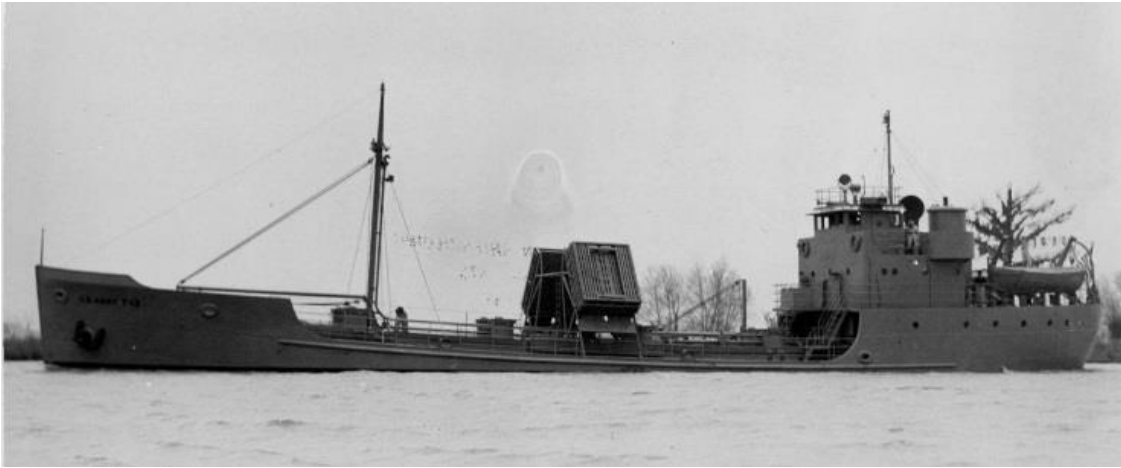
Built by Odenbach S.B. Corp., Rochester (#8), for US Army as Y-8. 2/49 sold at Hong Kong to Madrigal Shg Co. Inc. r. TAURUS and converted to general cargo. 15/3/49 first advertised voyage Manila-Aparri. 28/3/50 sailed Angas for Tanduc. 30/6/64 aground c.30 miles NE of Bulan en route Sorsogon-Manila with general cargo, 31/8 refloated. 1967 converted to barge. NFI.



YO-142 was a sister of Y-8/TAURUS (Navsource).

PERLA (ii) (1948-57) 484/43 ('Y' tkr, 162' design)

Built by Levingston S.B. Co., Orange (Tx) (#267) for US Army as Y-21. 1946 reported sold to Hong Kong owners. 12/48 sold to Madrigal Shg Co. Inc., conv. at Hong Kong for cargo and passengers r. PERLA. 5/49 switched from Manila-Iloilo route to Manila-Aparri service. 23/9/50 sailing Manila/Virac, as 6/53. By 3/57 sold to North Camarines Lumber Co. Inc., Manila. 1/60 advertised for South Sea Shg Line. By 30/7/63 advertised for N. & S. Lines Inc. 1/65 integrated into fleet of Filipinas Pioneer Lines but from 1/67 readvertised for N. & S. Lines Inc. 1967 sold to N. & S. Lines Inc., Philippines. RLR 1990.



Y-13 was a sister of Y-21/PERLA (Navsource).

KAIULANI (1947-64) 1699/99 (sailing ship-barge)

Built by A. Sewell & Co., Bath, Maine (#44) for Williams, Diamond & Co., San Francisco as KAIULANI. Later sold to Alaska Packers Association, San Francisco r. STAR OF FINLAND. 1939 reported stripped of sails and spars in storm in Philippine waters. 1940 sold to D.H. Bates, San Francisco. 1941 sold to Cia de la Estrella S.A., Panama (Hammond Lumber Co.) r. KAIULANI. 1949 sold to Madrigal Shg Co. Inc., used on Manila-Mindanao route, later described as barge. 31/8/54 tow broke from *Lepus* (2294/11) 6 m. N. of Maniguin Lighthouse in storm, later recovered. 23/11/64 presented at Manila as gift to the Maritime Society of the District of Columbia on behalf of the American people for preservation as a relic. 11/65 "under renovation" in Philippine naval yard, funding sought. Later bow, stern and some ribs taken to San Francisco for preservation. [*Photo in Manila Times 20/11/64 p.3B*].



STAR OF FINLAND (Texas Tech University).

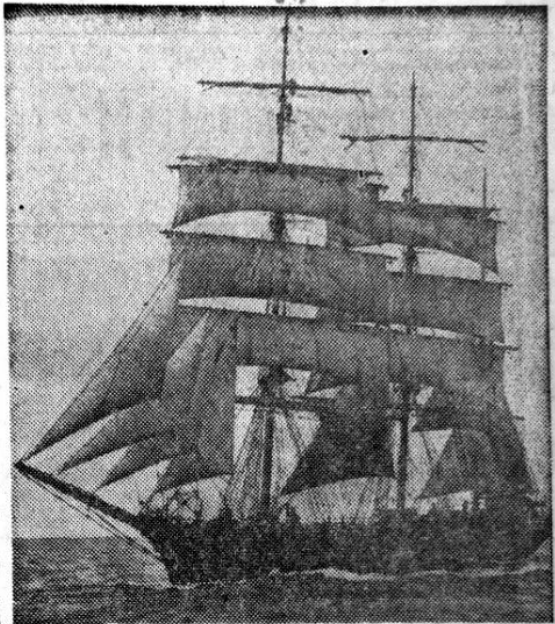
Madrigal donates ship to US

The Kaiulani, a 65-year-old sailing ship that has served for years as a log-hauling barge on the Mindanao-Manila run, of the Madrigal Shipping Co., will occupy the spotlight in ceremonies to be held in Malacñang on Monday afternoon.

Last of 17,000 ships

The ship, a 225-foot, three-masted bark, has been identified as the last of the 17,000 sailing ships of this type which used to serve as the mainstay of the American merchant fleet.

According to Dr. Alan D. Hutchison, who is



RP DONATION TO US

The sailing ship Kaiulani serving as a log-hauling barge on the Manila-Mindanao route of the Madrigal Shipping Company in the past few years, will be donated to the US for permanent enshrinement as a floating museum in Washington, D.C.

(Manila Times report 20/11/64.)

ARGUS (1948-53) 1243/11

see **HIRONDELLE** (1941-48)

OYASHIMA MARU (1948-c.51) 10052/34 (tkr)

Built by Kawasaki Dockyard Co. Ltd, Kobe (#584) for Iino Shoji K.K., Higashi Maizuru as **KYOKUTO MARU**. 5/7/38 requisitioned by IJN, later r. **OYASHIMA MARU**. 12/41 attached to task force attacking Hawaii. 21/9/44 bombed and sunk by US aircraft in Manila Bay at Binacayan Bay between Manila and Sangley Point, Cavite. 22/4/48 Atlantic, Gulf & Pacific Co. reported to seek authorisation to raise and recondition. Raised by Philippine authorities, 1948 sold to M&Co. but resold to Nippon Yusosen K.K., Tokyo. 1952 reconstructed at Osaka, fitted with donkey boiler (1919) r. **CALIFORNIA MARU**. 26/8/64 demolition began at Hirao, Japan.



KYOKUTO MARU (builders/S. Kizu).



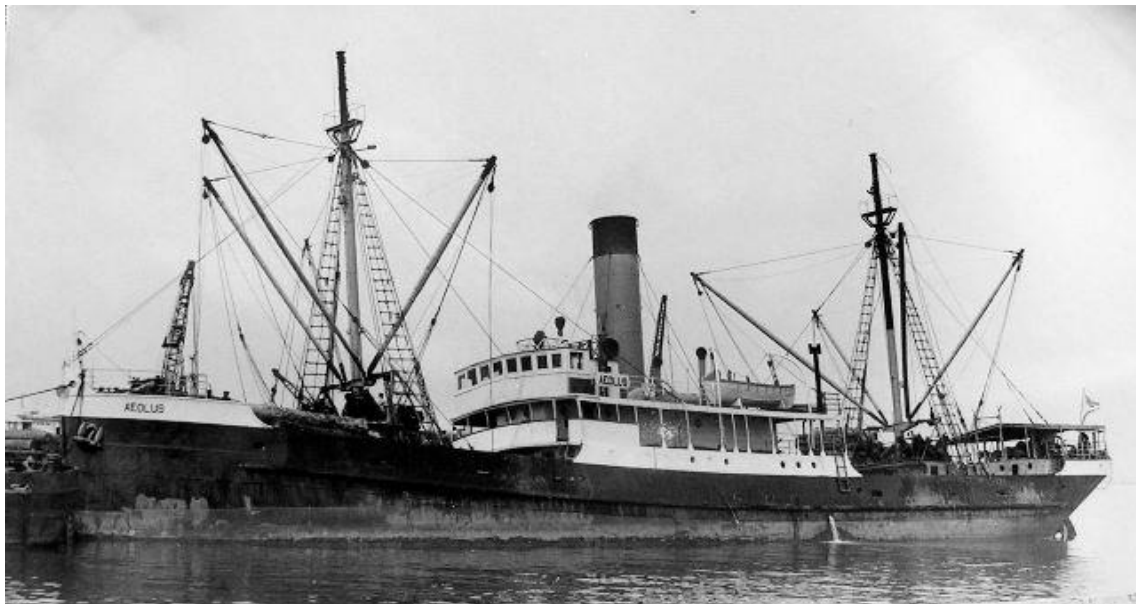
Likely raised KYOKUTO MARU at Manila c.1948-51 (Ebay).



Rebuilt as CALIFORNIA MARU after a brief Madrigal ownership (H. Noma/S. Kizu).

AEOLUS (1949-73) 1140/10

Built by A. Rodger & Co., Port Glasgow (#413) for Blackball Coal Co. Ltd, London as NGATORO. 1922-42 chartered to Union S.S. Co. of New Zealand Ltd. 1923 transferred to Mann, George & Co., Sydney. 1927 t/f to Blackball Coal Mines Pty Ltd, Wellington. 1942 sold to Union S.S. Co. of New Zealand Ltd, Wellington. 5/49 sold at Sydney to Madrigal Shg Co. but delivery dispute delayed sailing until 18/8 via Newcastle for Manila, where r. AEOLUS. 16/9/49 maiden voyage Manila-Aparri with passengers and cargo. 5/51, 6/51 sailing Bangkok-Manila with rice. 16/10/53 arrived Manila after refit in Japan, replacing sunken ARGUS. 3/54 Manila-Aparri with passengers and cargo. 11/54 sailing North Borneo-Manila-Hong Kong. 18/2/55 due Manila from Hong Kong with 184 tons of cargo. 1968 reported conv. to lumber barge (same owners), but still intact as a steamer at Manila 6/70. 7/73 demolition commenced at Hong Kong by Leung Yau Shipbreaking Co. Ltd.



AEOLUS at Manila, 6 June 1970 (W. Schell).

LEPUS (1949-56) 2427/11

see **TRISTAN** (1941-49)

SULA (1951-59) 6547/19

Built by Asano S.B. Co., Tsurumi (#17) for USSB, San Francisco as EASTERN MERCHANT. 11/4/20 sailed San Francisco for Far East, Pacific Mail S.S. Co., mgrs. 1/8/21 mgrs Williams Dimond & Co. Q2/1922 laid up at Seattle. 2/6/22 sold to Luckenbach S.S. Co., New York r. ROBERT LUCKENBACH. 25/7/47 sold to Giacomo Costa fu Andrea, Genoa r. LUISA C, fitted for carrying passengers. 15/4/51 sold to Cia Nav. Globe, Panama r. SULA. 9/12/51 arrived Manila from Baltimore via Aden, Karachi and Japan. 12/1/59 arrived Osaka for demolition by Sangyo Shinko K.K. [*Offered by Duncan 2/93*].



SULA (*The Costa Liners*).

VENUS (1951-59) 7631/20

Built by Sun S.B. Co., Chester (#21) for N.V. Rotterdamsche Lloyd (Wm. Ruys & Zonen), Rotterdam as SALATIGA. 1926 sold to A.B. Williamson & John Lawson, London. 1926 sold to Alaska Packers Asscn, San Francisco r. BERING, registered with passenger certificate. 1946 sold to Cia Internacional de Vapores Ltda, Puerto Cortez r. HELLENIC. 1951 sold to Cia Nav. Globe, Panama r. VENUS. 1/11/57 arrived Manila from Bangkok with 5204 metric tons of rice, 3 pass. 26/7/59 arrived Nagasaki for demolition, work beginning following month. [*VENUS of "Atlantic, Gulf and Pacific Co. of Manila Inc." mentioned MT 18/5/60: RSPCA award to Philippine apprentice engineer after saving drowning dog at Birkenhead 7/12/58*].



VENUS at Cape Town, 1958 (W.M. Scott/W. Schell).

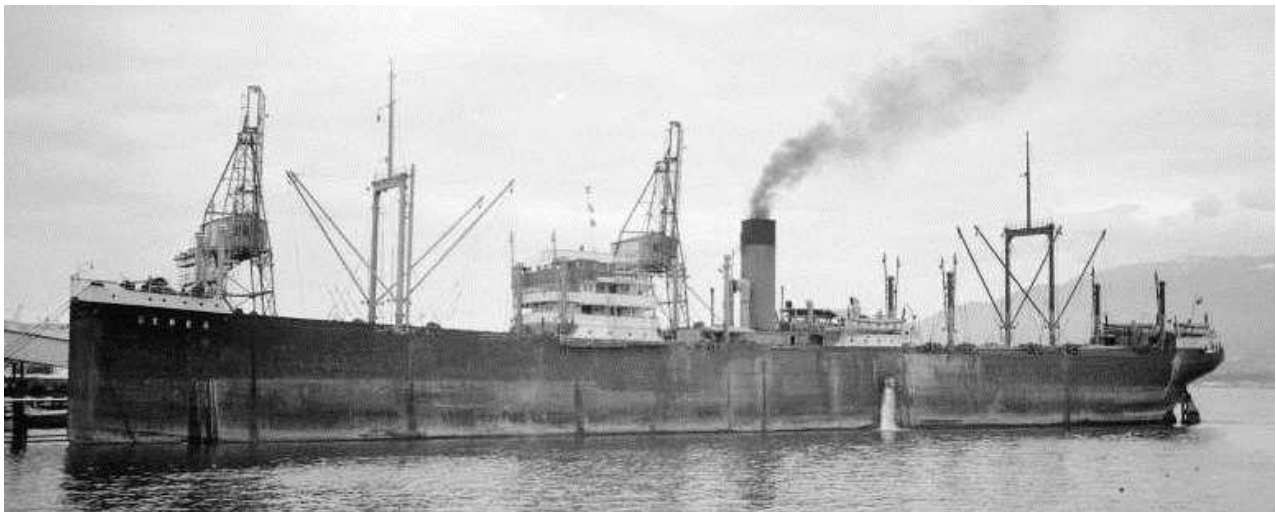


VENUS at London c.1959 (photographer unknown, coll. Malcolm Cranfield).

CERES (1952-59) 10894/22 (2-sc. ST by D. Rowan & Co. Ltd, Glasgow)

Built by Lithgows Ltd, Port Glasgow (#743) for Koninklijke Nederlandsche Stoomboot Maats., Amsterdam for Netherlands-Far East line as AMERSFOORT but 10/22 completed for N.V. Java-China-Japan Lijn, Batavia as TJIBESAR. 31/10/24 collided with *El Mundo* (6008/10) at Galveston. 5/41 t/f to Netherlands Shipping

Commission, Willemstad. 20/9/41 Batavia via Auckland, Panama, New Orleans to New York, thence 18/1/42 for Singapore but from Padang 2/3 diverted to Albany and Melbourne (20/3), where 14/4 del. on charter to MOWT and then sub-charter to USWSA. 1/8/45 at Los Angeles redel. to Netherlands Govt. 6/46 reverted to JCJL. 12/47 t/f to N.V. Koninklijke Java-China Paketv. Lijnen (Royal Interocean Lines), Amsterdam. 6/52 del. at Hong Kong to Cia de Nav. Globo, Panama r. CERES. 24/11/59 arrived at Nagasaki for demolition by Koyagi Sangyo K.K.



CERES at Vancouver (W. Schell; Walter E. Frost; unknown photographer, coll. Malcolm Cranfield).

ZEUS (i) (1953-57)

see Y-35 (1946-?53)

AMEISE (1955-60) 3021/24

Built by Dunlop, Bremner & Co. Ltd, Port Glasgow (#343) for Melbourne Steamship Co. Ltd, Melbourne as LOWANA. Early 1955 sold through George Grimble & Co. Ltd to Cia Globo de Nav. S.A. (V. Madrigal), Panama. 1960 sold to Kimberley Shipping Corp. (James Lee, Hong Kong), Panama r. DENNIS 1. 22/2/62 demolition began at Hong Kong by Lee Sing Co.



AMEISE at Hong Kong in 1959 (R. Gabriel/HD).

JUNO (1955-64) 1364/27

Built by J. Lewis & Sons Ltd, Aberdeen (#102) for James Patrick & Co. Ltd, Melbourne as CARDROSS. 1935 sold to John Burke Ltd, Brisbane r. BIDEZIA. 1955 sold to Caribbean & St Lawrence Navigation Co. S.A. (c/- Victor B. Bendix Inc., New York), Panama r. JUNO. 3/8/58 with *Susana* arrived Manila from Burma with rice. 1959 t/f to Cia Globo de Nav. S.A., Panama (V. Madrigal). Missing from 10/10/64 after reporting from position 18.20N 118.44E on voyage Kaohsiung-Brunei with cement, bricks and general cargo.



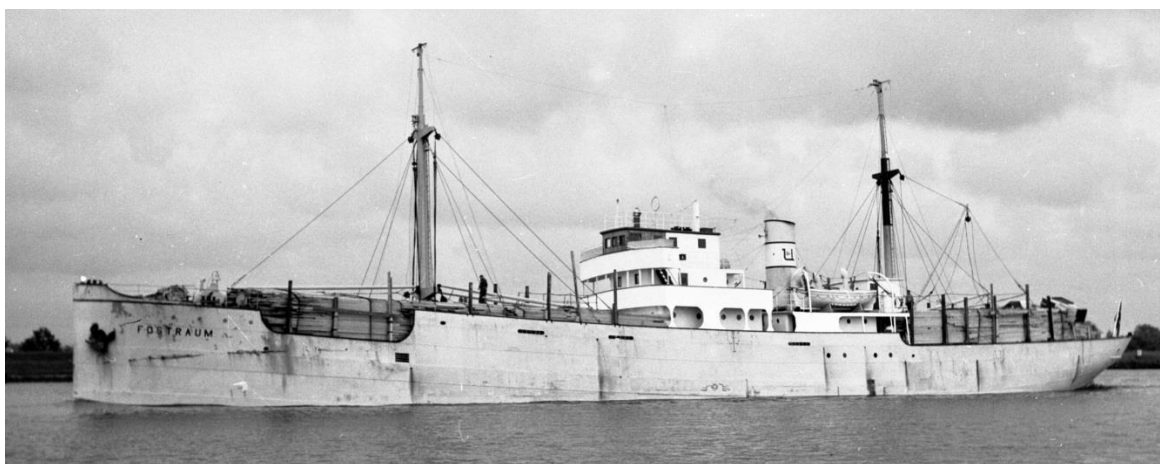
JUNO in original guise as James Patrick's CARDROSS (A.C. Green@SLV).



JUNO at Hong Kong in 1959 (R. Gabriel/HD).

BOBO (1956-59) 1205/95

Built by Krupp Germania A/G, Kiel for H.M. Gehrckens, Hamburg as KALMAR. 4/45 sunk in Porsgrunn during Allied air attack. Raised by A/S Dykker, Oslo, 6/47 sold to Skibs A/S Gerdhild (Rich Jacobsen mgr), Drobak r. GERDHILD. 1950 sold to Erling Mortensen A/S, Oslo, 5/50 resold to Skibs A/S Straumfart (Anders Utkilen mgr), Bergen r. FOSTRAUM. Original T3cy engine replaced by Krupp Diesel (950 bhp). 11/56 sold to Celestial International Corp. (c/- Victor B. Bendix, New York), Puerto Cortes r. BOBO. 1959 sold to Caribbean Federation Lines Ltd, Nassau r. COMPADRE. 1959 resold to Naviera Azteca S.A., Mexico r. VALLADOLID. Reported broken up 1963 (no details).



BOBO as FOSTRAUM in the Noordzeekanal (Ymuiden-Amsterdam) (G. Bunschoten/W. Schell).

PHILIPPINE MERCHANT (1956-57) 3545/20 (Type-1038)

Built by Mobile Shipbuilding Co., Mobile (#8) for U.S Shipping Board as 4-masted steamer MINOOKA. 1929 sold to Gulf Pacific Line Inc., San Francisco r. POINT SAN PABLO. 1931 sold to Cormick S.S. Co. Inc., San Francisco. 1941 sold to Pope & Talbot Inc., San Francisco. 1948 sold to United Navigation Co. Ltd (Dow &

Symmers Inc., New York), Panama. 1950 sold to Cia Maritima Ircar, S.A., Panama (Vlassopulo Bros. Ltd) r. PAKISTAN PIONEER. 1953 sold to Cia Mar. Oriental S.A., Panama r. ASIATIC. 1954 sold to Republic Shg Co., Manila r. ANTIMAR. 4/11/54 grounded on San Vicente, Cagayan during typhoon 'Pamela' with cargo of logs. 13/11/54 still aground but not seriously damaged, *Lepus* (2294/11) standing by. 5/55 sold to Henderson Trippe (Philippines) Inc. r. PHILIPPINE MERCHANT. 5/55 sailed to Aparri to load logs for Japan. 5/56 41 crew end strike in Yokohama following promise by Henderson Trippe to pay back wages. 1956 sold to Madrigal Shg Corp. Inc, Manila. 16/11/56 ran aground off Mission, Cagayan on voyage to Japan with chrome ore and lumber while seeking shelter from typhoon 'Lucille', leaking in holds 2 & 4, crew taken off but no immediate danger. 5/6/57 refloated and towed to Manila but mid-1957 driven ashore in typhoon and abandoned as CTL, presumed scrapped soon after. [Photo (bow cut) in MT 8/5/55. MT 11/56 says on charter from Madrigal Shg Co.].



POINT SAN PABLO in 1948-50 (greekshippingmiracle.org).

ZEUS (1957-63) 3345/23

Built by Poole & Steel Ltd, Port Adelaide (#3) for Australian Commonwealth Line of Steamers, launched as ERINA but completed as EUGOWRA and reg. at Port Adelaide. 3/25 sold to Broken Hill Proprietary Co. Ltd, Melbourne r. IRON WARRIOR. 6/57 sold to Onofrio Jacomino, Naples to be renamed BASILUZZO but on default laid up at Newcastle. 10/57 sold to Caribbean & St Lawrence Navigation Co. S.A. (c/-Victor B. Bendix, Inc., New York), Panama r. ZEUS. 1963 t/f to Cia Globo de Nav. S.A. (Madrigal Shg Co. Inc., Manila), Panama. Late 1963 sold to Cia Naviera Immanuel S.A., Panama (Frederick Shg Co./Lee Shek Tung, Hong Kong) r. DORAR. 5/9/64 broke moorings, damaged in collision with other vessels, hit rocks and foundered off Kau I Chau, Hong Kong during typhoon 'Ruby' while on voyage Banyuwangi (East Java) to Japan with copra and ebony. [details from 'The Iron Ships']



ZEUS as IRON WARRIOR (A.C. Green@SLV).

SULA (1959-69) 5381/43-7 ('North Sands')

Built by Burrard D.D. Co. Ltd, Vancouver (#180) for Canadian Government (Charlton, McCallum & Co. Ltd, Newcastle-on-Tyne mgrs), Vancouver as FORT COLUMBIA. 1946 sold to Saguenay Terminals Ltd, Montreal r. SUNRELL. 1948 registered at London. 1959 sold to Pacific Tdg & Nav. Co., Panama r. SULA. 17/9/69 arrived at Kaohsiung for breaking up by Shieh Sun Sa Iron & Steel Works [1975 RLR].



SULA in June 1959 (Dr. George Wilson).



SULA looking smart at her birthplace of Vancouver in March 1967 (Marc Piche*).

AMEISE (1960-71) 7113/44 ('Canadian')

Built by United Shipyards Ltd, Montreal (#38) for Canadian Gov't (Park S.S. Co. Ltd mgrs), Montreal as EASTWOOD PARK. 1947 sold to Saguenay Terminals Ltd, Montreal, later Port Alfred. 1948 r. SUNAVIS. 1953 r. SUNKIRK. 1960 sold to Pacific Tdg & Nav. Ltd, Monrovia r. AMEISE. 9/6/71 arrived at Kaohsiung for breaking by Keun Nan Steel and Iron Works Co. Ltd, work began 20/6/71, completed 15/7/71.



AMEISE departing Sydney after discharging timber (J.Y. Freeman*).

CERES (1960-70) 6853/44 ('Canadian')

Built by United Shipyards Ltd, Montreal (#39) for Canadian Gov't (Park S.S. Co. Ltd mgrs), Montreal as WELLINGTON PARK. 1947 sold to Saguenay Terminals Ltd, Montreal, later Port Alfred. 1948 r. SUNWHIT. 1960 sold to Pacific Tdg & Nav. Ltd, Monrovia r. CERES. 30/3/70 sailed Himeji for Osaka for breaking up by Sangyo Shinko K.K. at Izumi-Ohtsu, work began 15/4/70.



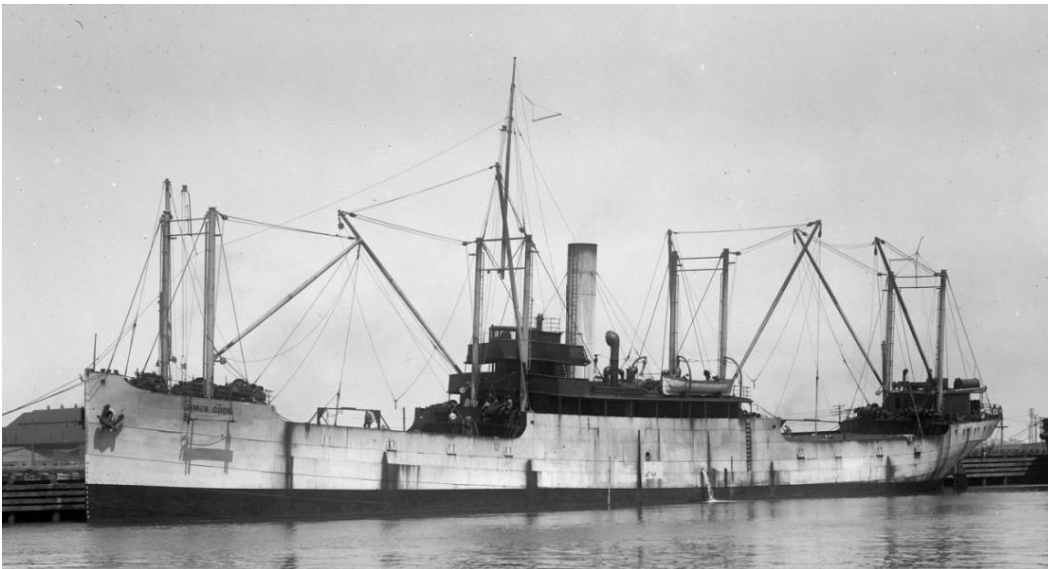
CERES at Vancouver (coll. W. Schell).

CONCEPCION (?1960-??)

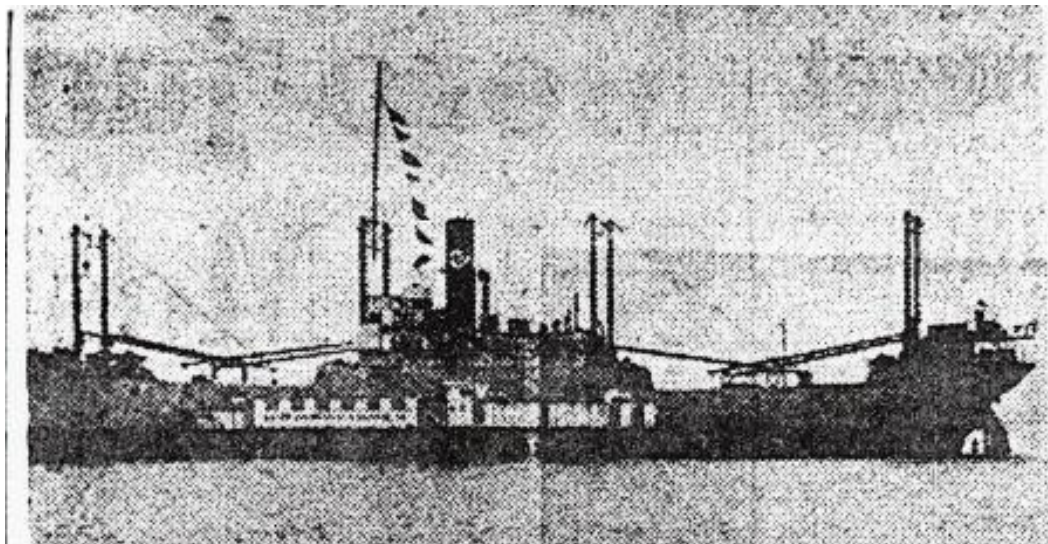
see Y-35 (1946-?53)

PHILIPPINE TRADER (1961-??) 2181/21

Built by A/S Moss Vaerft, Moss (#37) for Skibs A/S Christen Smith's Rederi (Christen Smith mgr), Oslo as BELFRI. 11/34 sold to H.C.S. Coasters Pty Ltd (H.C. Sleigh mgr), Melbourne r. JAMES COOK. 13/6/52 arrived Sydney from NZ and laid up. 3/54 sold to Henderson Trippe Shg Co. Inc. 3/9/54 t/f to Philippine Maritime Shg Lines Inc. and towed to Philippines where r. PHILIPPINE TRADER. 28/10/54 blessed in Manila Bay, 24/12 on trials (described as 'first Philippine cattle ship'). 1/4/55 arrived Manila with 550 cattle from Australia (Henderson, Trippe, agents). 16/4/55 picked up Japanese straggler off Calatang Point, Cape Saniago Bay. 12/5/55 arrived Manila with 578 cattle from Australia (Henderson, Trippe, agents). 12/6/55 arrived Manila from Australia with 588 cattle. 20/7/55 due Manila from Darwin with 600 cattle. 7/56 sailed for Australia. 9/9/56 arrived Manila from Australia with 697 cattle. 4/2/57 arrived Manila from Queensland with 699 cattle. 17/6/57 arrived Manila with 695 cattle from Australia. 22/7/57 arrived Manila with 700 cattle. 29/8/57 arrived Manila with 714 cattle from Australia. 11/57 arrived Manila with 740 cattle from Townsville. 1961 sold to Madrigal Shg Co. Inc. 12/62 arrived Manila with 1000t of cargo from Japan. 3/3/69 touched bottom, sprang leak, beached off Consuelo, Carrascal Bay, Mindanao while carrying logs, 9/3 refloated for repair. RLR 1992/93



JAMES COOK in H.C. Sleigh colours (A.C. Green@SLV)



PHILIPPINE TRADER wearing Henderson, Trippe markings (*Manila Times* 29/10/54).

SUSANA (1962-68) 5025/51

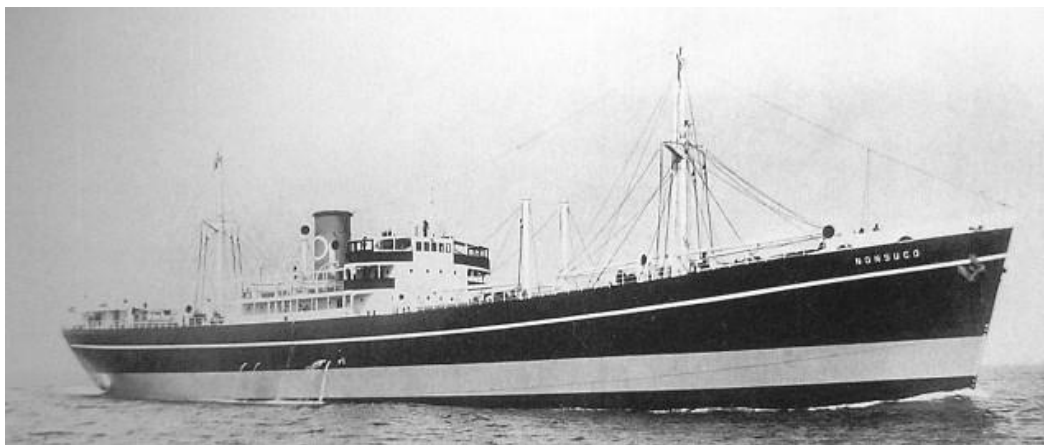
Built by C. Connell & Co. Ltd, Glasgow (#467) for Denholm Line Steamers Ltd (J. & J. Denholm Ltd, mgrs), Greenock as LYLEPARK. 1962 sold to Pacific Tdg. & Nav. Ltd, Monrovia r. SUSANA. 1968 sold to Industrial Nav. Co. Inc. (Interocean Shg Co. Ltd, Hong Kong mgrs), Liberia r. SEAMASTER. 1969 registered in Mogadishu. 1972 t/f to Szeto Kwan (same mgrs), Mogadishu. 1976 sold to Dolphin Shg Inc., Mogadishu r. DOLPHIN. 1976 r. SUNNY DOLPHIN. 10/77 b/u at Hong Kong by Fuji, Marden & Co.



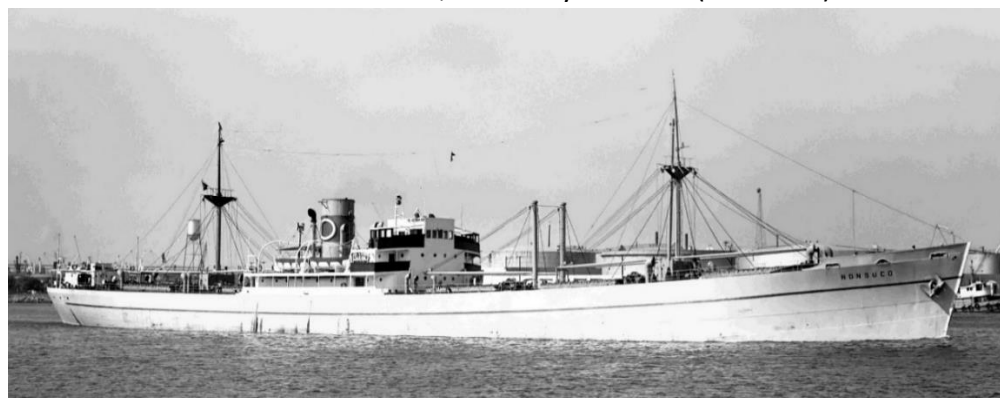
SUSANA at Rotterdam in August 1964 (Alex. Duncan/W. Schell).

SIRIUS (1962-71) 5212/38 (m)

Built by Wm Doxford & Sons Ltd, Sunderland (#641) for North Negros Sugar Co. Inc., Manila as NONSUCO. 1946 in service Philippines-New York for M/V Nonsuco Inc., Manila. 1949 sold to Victorias Milling Co., Manila. 1962 sold to Madrigal Shg Co. Inc. r. SIRIUS. 6/71 arrived at Kaohsiung for demolition by Nan Feng Steel Enterprise Co.



SIRIUS as NONSUCO, evidently on trials (Doxfords).



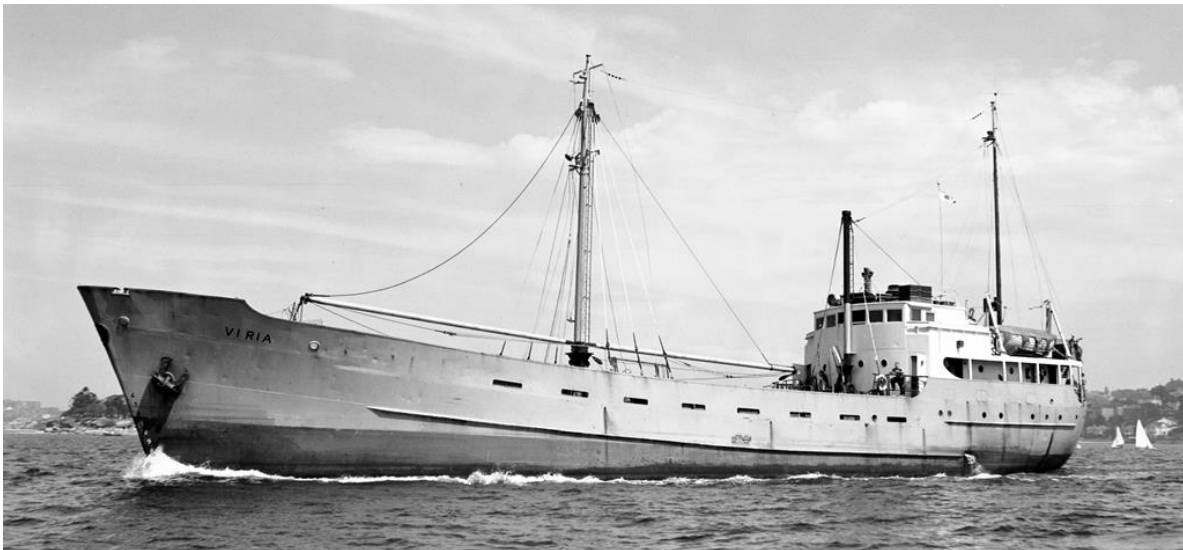
SIRIUS as NONSUCO arriving New Orleans, no date (Eric Johnson/M. Cranfield)



SIRIUS (P. Foxley/W. Schell).

VIRIA (1965-7?) 548/48

Built by Kalmar Varv. Kalmar (#10) for Rederi A/B Virginia (O.M. Thore), Jonstrop as VIRIA. 1949 chartered to Mr Dalhoff (Sw.) of Nelson for New Zealand coastal and trans-Tasman trade. 1950 sold to New Guinea Industries Ltd (V. Zavatarra), Lae (reg. Port Moresby) for coastal trade, especially oil drums. 8/57 sold to Hethking Steamships Pty Ltd, Sydney for sugar trade with North Coast NSW. Mid-1965 sold to Madrigal Shg Co. Inc., Manila, 6/9 dep. Sydney for Manila. 4/11/67 driven aground at Legaspi by typhoon 'Emma' but recovered. RLR 1990. [Described in <https://psssonline.wordpress.com/tag/compania-maritima/> as the only passenger-cargo ship still sailing for Madrigal in the 1970s but out of service by end of the decade].



VIRIA at Sydney (C. Gee coll.).

ARTHUR CROSS (1964-70) 6953/44 ('North Sands')

Laid down by United Shipyards Ltd, Montreal (#23) for Canadian Govt for charter to MOWT as FORT CROWN POINT but completed for Canadian Govt (Park S.S. Co. Ltd mgrs), Montreal as ALDER PARK. 1946 sold to Dominion Shg Co. Ltd, Montreal r. ARTHUR CROSS. 1964 sold to Pacific Tdg & Nav. Ltd, Monrovia. 3/4/70 arrived Hong Kong for demolition by Lee Sing & Co. Ltd.



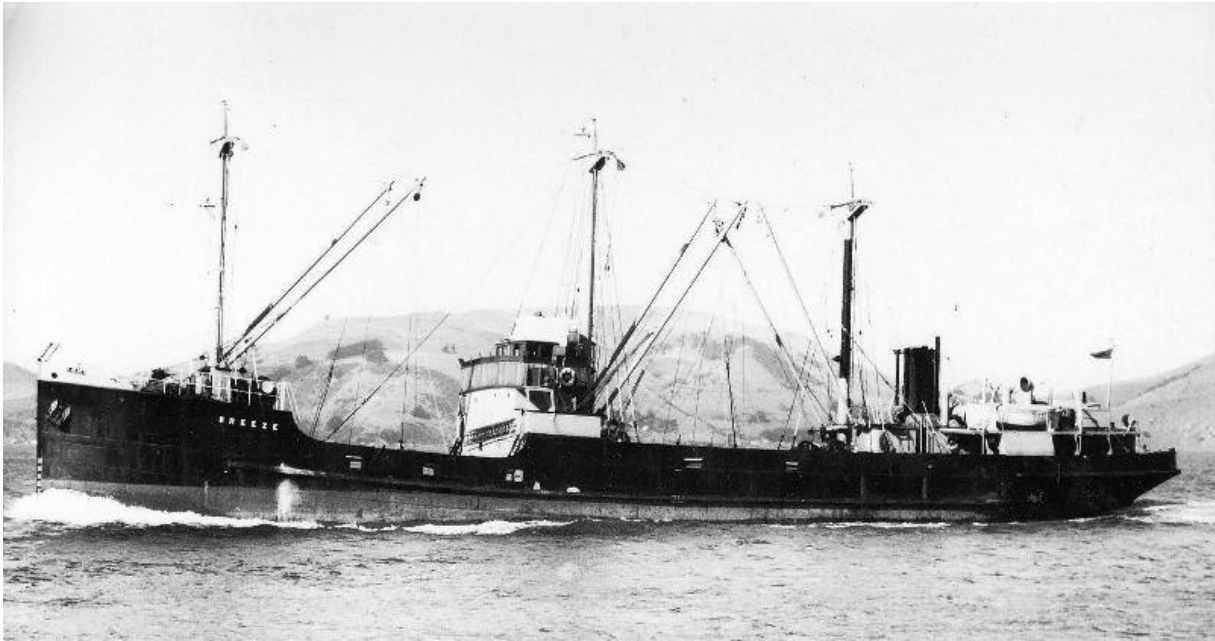
ARTHUR CROSS at Boston, lying in the waiting berth at the scrap dock, after her purchase in 1964 by Madrigal, presumably on her way to the Far East (Albert Guerra/W. Schell).



ARTHUR CROSS in the Straits of Malacca (Peter Foxley*)

BREEZE (1964-66) 625/33

Built by Scott & Sons, Bowling (#324) for Canterbury S. Shg Co. Ltd, Lyttleton as BREEZE. 15/8/35 sank fishing boat *Bessie* off Pareora. 12/12/40 minor damage in collision with tug *Terawhiti* at Wellington. 3/42 commissioned in RNZN as minesweeper. 5/7/43 minor collision with LST 895 off Guadalcanal. 5/45 returned to owners' service. 14/4/61 off Kaikoua rescued crew of fishing boat *Endeavour*, which foundered under tow. 12/64 sold to Madrigal Shg Co. Inc., not renamed. 1966 sold to Balabac Nav. Inc., Manila r. BALABAC. Late-1966 aground for 7 days off Panacan Islands, pulled free by main engines and winches, minor denting to hull. 1975 r. DON BENIGNO. 1980 r. DON ESTEBAN. 1980 sold to Sarmiento Lumber Co., Davao r. SARMIENTO. NFI. Deleted LR1990 as DON ESTEBAN.



BREEZE (Internet).



DON BENIGNO ex BALABAC ex BREEZE at Manila North Harbour, 11 June 1970 (W. Schell).

LOUISBURG (1964-70) 6954/43 ('North Sands')

Built by United Shipyards Ltd, Montreal (#8) for Canadian Gov't (Park S.S. Co. Ltd mgrs), Montreal as ELK ISLAND PARK. 1946 sold to Dominion Shg Co. Ltd, Montreal r. LOUISBURG. 1964 sold to Pacific Tdg & Nav. Co., Manila with delivery 1/65. 1970 sold to Cargo Carriage Inc., Mogadishu r. ASIFAR. Later in 1971 r. LIGHTENING. Oct. 1971 damaged by a mine at Chalna (presumed planted by Bengal separatists). 8/76 scrapped at Chittagong by Ship Scrap Traders. *[Photo in SK collection]*.



LOUISBURG (Malcolm Cranfield).



LOUISBURG at Auckland in 1969 (Doug Brigham/W. Schell).



At Sydney (J.Y. Freeman*)



LOUISBURG in Straits of Malacca (P. Foxley*)

WABANA (1964-72) 6955/43 ('North Sands')

Built by Marine Industries Ltd, Sorel (#108) for Canadian Gov't (Park S.S. Co. Ltd mgrs), Montreal as GLACIER PARK. 1946 sold to Dominion Shg Co. Ltd, Montreal r. WABANA. 1964 sold to Pacific Tdg & Nav. Ltd, Monrovia. 3/8/70 sunk in shallow waters at Tanoura after collision with *Heiryu Maru* (5453/67), during voyage Kitakyushu-Singapore, 11/8 refloated. 18/1/72 arrived at Kaohsiung for demolition by Nan Feng Steel Enterprise Co. Ltd, work began 26/1/72, completed 20/2/72.



WABANA at Montreal, 8 July 1959 (R. Cowen/W. Schell).

BREEZE (1966-?) 1383/46

Built by Grangemouth Dockyard Co. Ltd, Grangemouth (#467) for Straits S.S. Co. Ltd, Singapore, later Kuching as BENTONG. 1966 sold to Madrigal Shg Co. Inc. r. BREEZE. RLR 1993.



BENTONG (Laxon, Straits Steamship Fleets).



BREEZE and DON CIRILO (unidentified) at Manila North Harbour, 16 June 1970 (W. Schell).

MARIA SUSANA (1966-72) 6974/44 (Canadian 'Victory')

Laid down by West Coast Shipbuilders Ltd, Vancouver (#143) for Canadian Govt for charter to MOWT as FORT MACKINAC but 13/8/44 completed for Canadian Govt (Park S.S. Co. Ltd mgrs), Montreal as DOMINION PARK. 4/46 sold to Canadian-Australasian Line Ltd, Montreal r. WAIHEMO. 10/47 t/f to Canadian-Union Line Ltd (Union S.S. Co. of New Zealand Ltd mgrs), Vancouver. 1950 registered at Wellington. 14/9/61 t/f to Union S.S. Co. of New Zealand Ltd, Wellington. 1966 sold to Pacific Tdg & Nav. Ltd, Panama r. MARIA SUSANA. 1968 t/f to Pac-Trade Nav. Co., Panama. 24/2/71 grounded off Hiran Point on passage Karachi-Chalna. 16/3 arrived at Chalna after refloating. 27/5/72 arrived at Kaohsiung for demolition by Dong Yung Steel Ent. Co. Ltd, work began 8/8/72.



MARIA SUSANA at Sydney (J.Y. Freeman*).

ROSA ANA (1966-67) 2577/44

Built by Henry Robb Ltd, Leith (#332) for Union S.S. Co. of New Zealand Ltd, Wellington as KAIMANAWA. 6/44 on completion requisitioned by MOWT (General S.N. Co. Ltd, mgrs) for coastal and then cross-Channel service Thames-Belgium ports. 9/46 sailed UK for Auckland (11/46). 1966 sold to Madrigal Shg Co. r ROSA ANNA. 15/1/67 grounded on Sibuyan Island, CTL. Salvaged and 7/67 broken up at Hong Kong by Wo Hing & Co. [*MT 3/67 as ROSA ANA, 2516g, A.P. Madrigal S.S. Co.*]



KAIMANAWA on trials (leithshipyards.com).

MARIA ANA (1967-69) 5056/46

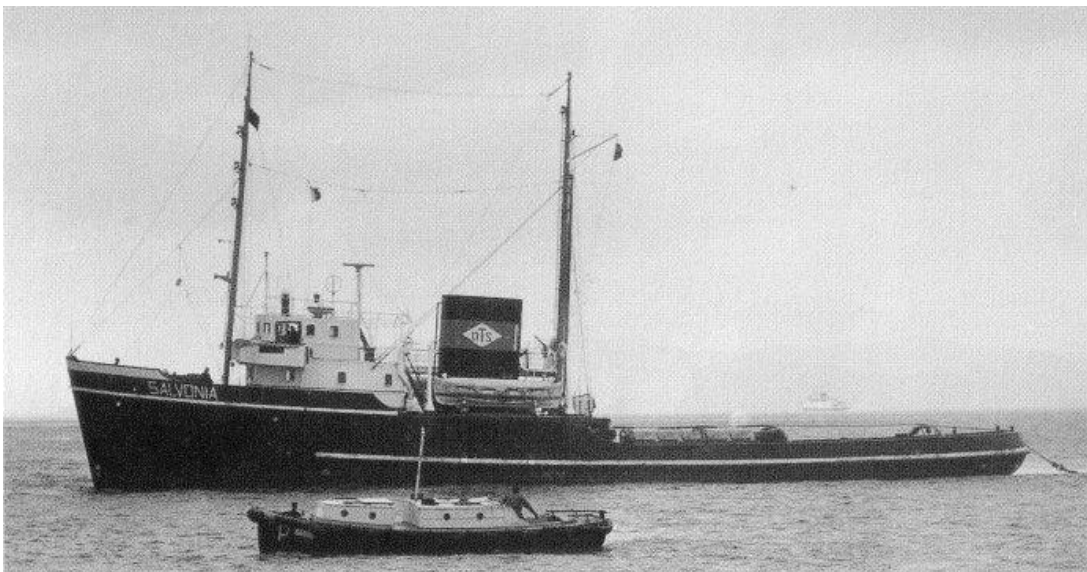
Built by Bartram & Sons Ltd, Sunderland (#309) for 'K' SS Co. (Kaye, Son & Co. Ltd), London as MARGAY. 1962 sold to Wing Tak S.S. Co. Ltd (Hong Kong) r. STAR PINK. 1966 r. OCEAN PINK. 1967 sold to Pac Trade Nav. Co., Panama (M&Co., Manila) r. MARIA ANA. 1969 sold to Velta Cia Ltda, Corinto r. VELTA. 13/2/71 sprang leak and sank about 200 miles S. of the Azores in 32.07N 23.26W on voyage Macapa-Bilbao with manganese ore.



MARIA ANA passing Maassluis inbound for Rotterdam, 27 April 1969 (BobS@Shipspotting).

SALVONIA (1968-73) 499/51 (tug)

Built by J. & K. Smit's Scheepswerven, Kinderdijk (#825) for L. Smit & Co.'s Sleepdienst N.V., Rotterdam as OCEAAN. 1968 sold to Pac-Trade Nav. Co., Panama r. SALVONIA. 1973 sold to Straits Maritime Co., Singapore. 1976 sold to Limerick Investments Inc., Singapore. 1979 sold to Oceansupport S.A, Panama r. GOOD PULLER. 31/1/83 delivered at Jurong for scrapping by National Shipbreakers (Pte.) Ltd, work began 2/83.



SALVONIA (zeesleepvaart.com).

V. MADRIGAL (1968-76) 31288/61 (tkr)

Built by Eriksbergs M/V A/B, Gothenburg (#559) for Mobil Tankers Ltd (Mobil Shg Co. Ltd mgrs), London as MOBIL ENDEAVOUR. 1968 sold to Madrigal Shg Co. Inc. r. V. MADRIGAL. 6/76 arrived Manila as last reported movement. c.4/11/76 arrived at Kaohsiung for demolition by Li Chon Steel & Iron Co., work began 29/11/76.



V. MADRIGAL (Adenanthos@Shipspotting).

MARIA ROSA (1969-73) 3759/38

Built by Caledon S.B. & E. Co., Ltd, Dundee (#376) for Colonial Sugar Refining Co. Ltd, Sydney as partial molasses tanker TAMBUA. 1969 sold to Pac Trade Nav., Panama r. MARIA ROSA. 1/73 arrived at Kaohsiung for demolition, work began 22/1/73.



MARIA ROSA ex TAMBUA (M.R. Dippy*).



MARIA ROSA visiting Fremantle in December 1970 (Fremantle Port Authority).

AMANDA (1970-72) 5799/49

Built by Lithgows Ltd, Port Glasgow (#1047) for Asiatic S.N. Co. Ltd, London as RAJAH. 1970 sold to Pac Trade Nav. Co., Panama r. AMANDA. 29/3/72 arrived at Kaohsiung for demolition.



AMANDA (P. Foxley/W. Schell).

EXMOUTH (1970-71) 4937/43

Built by Broken Hill Pty Co. Ltd, Whyalla (#2) for Broken Hill Pty Co. Ltd, Melbourne as IRON DUKE II. 1946 r. IRON DUKE. 1970 sold to Pac Trade Nav. Co., Panama r. EXMOUTH. 11/9/71 arrived at Kaohsiung for breaking by Hwa Eng Copper & Iron Industrial Co. Ltd, work began 1/10/71.



IRON DUKE (B. Nicol).

SLIDRE (1970-76) 1102/38

Built by A/S Akers Mek. Vaerks, Oslo (#475) for A/S Ganger Rolf (Fred. Olsen & Co mgrs), Oslo as BOMMA. 1966 sold to A/S Ansea (Skibs A/S Karlander mgrs), Oslo r. SLIDRE. 1970 sold to Pacific Tdg & Nav. Co. Ltd, Panama. 1971 t/f to Madrigal Shg Co. Inc. 20-21/5/76 dragged anchor, driven aground at Apra by typhoon 'Pamela' in position 13.26.30N 144.38E with lumber and scrap metal. Wreck sold for breaking up 'as lies'.



SLIDRE at Singapore, 21 July 1970 (W. Schell)

SULA (1970-74) 5867/49

Built by Barclay, Curle & Co. Ltd, Glasgow (#718) for Burns, Philp & Co. Ltd, Glasgow for Australia-Java-Straits trade as BRAESIDE. 1970 sold to Pacific Trade & Nav. Co. Ltd, Panama r. SULA. 5/8/72 stranded off Thamilha Island, near Bassein in 15.50N 94.12E on voyage Chittagong-Rangoon in ballast, 10/8/72 refloated but CTL. 16/4/74 arrived at Kaohsiung in tow from layup in Rangoon for demolition by Huang Yung Steel & Iron Corp., work began 3/5/74.



SULA off Port Kelang (P. Foxley/W. Schell).

ANA MARIA (1971-74) 4779/49

Built by Hall, Russell & Co. Ltd, Aberdeen (#806) for Tanker Corporation, Panama as VIKDAL. 1951 sold to Cie de Navigation Transoceanique Suisse S.A. (Keller Shipping Ltd), Basel r. GENERAL DUFOUR. 1971 sold to Madrigal Shipping Co. Inc., Panama r. ANA MARIA. 12/4/74 arrived at Kaohsiung for demolition by Yung Teh Steel & Iron Co. Ltd, work began 3/5/74.



ANA MARIA (P. Foxley/W. Schell).

SANTA CARINA (1971-74) 4100/49 (Commonwealth B class)

Built by Evans Deakin & Co. Ltd, Brisbane (#25) as 'B'-class steamer for Australian Shipping Board (Department of Shg & Transport mgrs), Brisbane as BILKURRA. 2/57 t/f to Australian Coastal Shg Commission. 1964 side port door and 1967 bulk cargo tanks fitted. 12/69 sold to Malaysian International Shg Corp. Berhad, Malaysia r. MALAYSIA MAJU. Early-1971 sold to Pac Trade Nav. Co., Panama r. SANTA CARINA. 6/10/74 delivered at Hsingkong to China National Metals Import & Export Corp. for demolition.



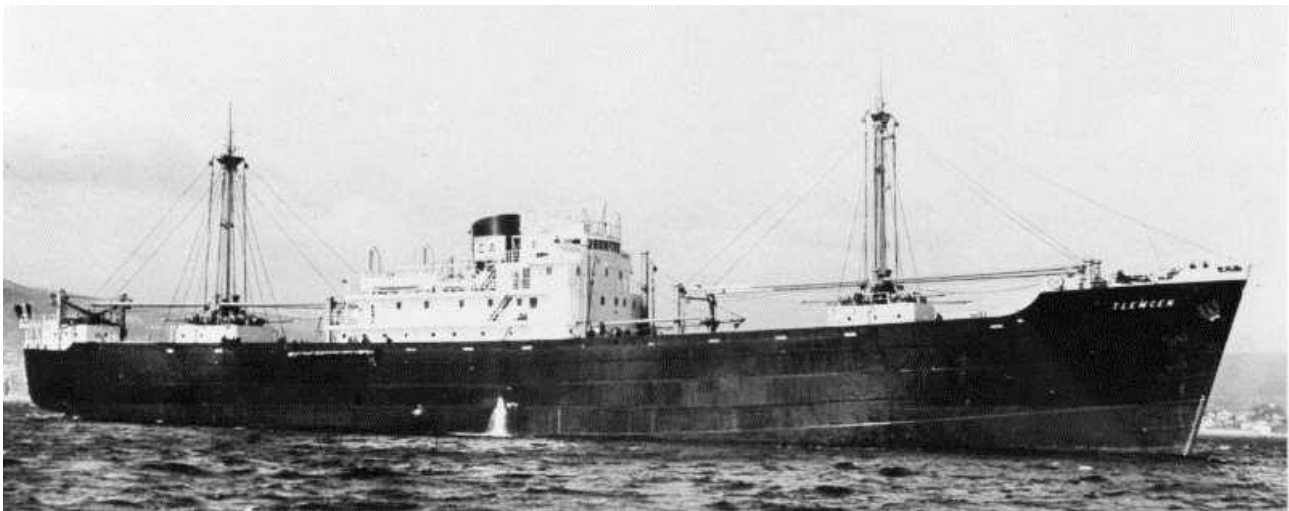
BILKURRA at Sydney after masts stiffened for lifting containers (Reg Wilson).



SANTA CARINA in Malacca Strait (P. Foxley/W. Schell).

SANTA LUCIA (1972-77) 3922/50

Built by Chantiers Navals de la Ciotat, La Ciotat (#166) for Nord Africaine de Nav. (Les Cargos Algériens, mgrs), Dunkirk as TLEMCEN. 1962 t/f to Nord Africaine de Nav. (Les Cargos Algériens, mgrs), Dunkirk. 1969 t/f to Les Cargos Algériens, Rouen. 1972 sold to Pac Trade Nav. Co., Panama r. SANTA LUCIA. 1977 transferred to Sidmouth Shg Inc., Panama r. SANTA LUCIA I. 5/7/77 demolition commenced at Kaohsiung by Nan Feng Steel Ent. Co. Ltd.



TLEMCEN (Hans Pedersen).

SANTA ODILIA (1972-77) 3920/50

Built by Chantiers Navals de la Ciotat, La Ciotat (#165) for Les Cargos Algeriens, Algiers as DJURDJURA. 1962 t/f to Nord Africaine de Nav. (Les Cargos Algeriens, mgrs), Dunkirk. 1969 t/f to Les Cargos Algeriens, Rouen. 1972 sold to Pac Trade Nav. Co., Panama r. SANTA ODILIA. 1977 t/f to Sidmouth Shipping Inc., Panama. Scrapped Kaohsiung 1977 by Tien Chang Steel Manufacturing Co. Ltd., arrived 14/6/77, work began 23/7/77.



DJURDJURA (diaressada.alger.free.fr)

SANTA ROSA (1971-74) 3952/50

Built by Evans Deakin & Co. Ltd, Brisbane (#26) as 'B'-class steamer for Australian Shipping Board (Department of Shg & Transport mgrs), Brisbane as BINBURRA. 4/57 t/f to Australian Coastal Shg Commission. 1964, side port door and 1966 bulk cargo tanks fitted. 10/69 sold to Malaysian International Shg Corp. Berhad, Malaysia r. MALAYSIA PERTAMA. 1971 sold to Pac Trade Nav. Co., Panama r. SANTA ROSA. 9/6/74 arrived at Kaohsiung and 7/74 demolition commenced by Tien Cheng Steel Mfg. Co. Ltd.



BINBURRA as built without 'Welsh hat' (A.C. Green@SLV).

SANTA SUSANA (1971-73) 4232/50

Built by Lithgows Ltd, Port Glasgow (#1048) for Asiatic S.N. Co., London as RANEE. 1971 sold to Pac Trade Nav. Co., Panama r. SANTA SUSANA. 5/7/73 arrived at Kaohsiung for demolition by Chien Tai Iron Works Co. Ltd.



RANEE in Malacca Strait on B.I. charter (Peter Foxley*).



SANTA SUSANA departing Fremantle for Gresik, Indonesia on 11 February 1972 (WSS Fremantle Branch Newsletter June 2021).

COASTAL (1972-77) 584/49

Built by Walkers Ltd, Maryborough (#30) for Australian Shipping Board (Department of Shg & Tpt mgrs), Sydney as 'E'-class motorship EDENHOPE. 6/51-6/53 bareboat chartered to Newcastle & Hunter River S.S. Co. Ltd. 2/57 t/f to Australian Coastal Shg Commission. 9/65 sold to Bougainville Trading Co. Ltd, Rabaul r. NUKUTOA in 1966. 1969 sold to Kinley Nav. Pty Ltd, Rabaul. 1972 sold to Madrigal Shg Co. Inc., Panama r. COASTAL. 1972 t/f to Pac Trade Nav. Co., Panama. 1977 sold to Mulgravi Shg Ltd, Panama. 5/12/78 stranded off Iligan City, after breaking adrift in strong winds from Maria Cristina Chemical Industries pier. 13/1/79 refloated and towed to Cebu City with extensive damage, CTI. 10/79 sold to G. Aberlarde for demolition at Cebu City.



EDENHOPE in Australian Shipping Board colours (A.C. Green@SLV).

SANTA ANA (1972-72) 6845/49

Built by Barclay, Curle & Co. Ltd, Whiteinch (#712) for Peninsular & Oriental S.N. Co. Ltd, London as CANNANORE. 1/3/72 sold to Madrigal Shg Co., later Pac-Trade Nav. Co., Mogadishu r. SANTA ANA. 26/8/72 arrived at Kaohsiung for demolition by Nan Yung S. & I. Co. Ltd who started work 5/10.



CANNANORE (both Malcolm Cranfield@Shipspotting).

SANTA URSULA (1972-73) 5670/48

Built by Lithgows Ltd, Port Glasgow (#1027) for Morlands Tank Rederi A/S (Arnt J. Morland mgr), Arendal as KVERNAAS. 1963 sold to Bordagain Shg Co. Ltd (Ramon de la Sota Jr. mgr), Monrovia r. BORDAPIAN. 1968 sold to Nam On Navigation Co. Ltd, Mogadiscio (Ankan Shipping Co. Ltd, Hong Kong) r. GIANT DRAGON. 1971 sold to Mutual Shipping Co. Inc., Mogadiscio (Interocean Shipping Co. Ltd, Hong Kong) r. SEA ENGINEER. 1972 sold to Pac-Trade Nav. Co. Ltd, Mogadishu r. SANTA URSULA. 6/3/73 arrived at Kaohsiung for demolition by Tai Kien Industry Co. Ltd, work begun 20/3/73.



KVERNAAS (skipshistorie.net).

LANCER I (1976-76) 32331/63 (tkr)

Built by Harland & Wolff Ltd, Belfast (#1600) for B.P. Tanker Co. Ltd, London as BRITISH LANCER. 1976 sold to Pro-Lija Shg Co. S.A. (A.P. Madrigal S.S. Co. Inc., mgrs), Panama r. LANCER I. 31/8/76 arrived Kaohsiung for demolition by Li Chong S. & I. Works Co. Ltd who began work 4/10.



BRITISH LANCER (Peter Foxley).

SANTA URSULA (1976-82) 3790/58

Built by A. Stephen & Sons Ltd, Glasgow (#661) for Union S.S. Co. of New Zealand Ltd, Wellington for trans-Tasman trade as KATEA. 1976 sold to Pac-Trade Nav. Co., Panama r. SANTA URSULA. 6/3/82 arrived at Kaohsiung for demolition by Hsi Ying Enterprise Co. Ltd, work begun 18/3/82.



SANTA URSULA (Peter Foxley/W. Schell).

SAINTE SUZANNE (1979-84) 10021/77

Built by Hashihama Zosen, Tadotsu for Adam Shg Ent. Corp., later Tredan Shg Corp., Monrovia as SCT VINCENT. 1979 sold to A.P. Madrigal Shg Co. Inc., Manila r. SAINTE SUZANNE. By 1984 owned by Adam Shg Ent. Corp. (Amas Nav. Ltd, Hong Kong mgrs), Manila. 1984 sold to Helmut Hermann Shg Co. Ltd, Cyprus r. BAVARIA STAR. 1989 sold to K/S Mostween 6 (Mostvold Shg Co. A/S mgrs), Kristiansand South r. MOSTWEEN 6. 4/90 r. HYACINTH TRADER. 8/90 r. MOSTWEEN 6. 10/91 sold to Ming Sung Carrier (Pa) S.A. (Ming Sung Shg, Hong Kong mgrs), Panama r. LUNG MEN. 1999 sold to Chuang Ye Shg (Jiangsu Far East Shg Co., mgrs), China r. CHUANG YE. 3/11 broken up by Jiangyin Xiagang Changjiang Shipbreaking Co., Jiangyin.



SAINTE SUZANNE as CHUANG YE (Timbo@shipspotting).

SAINTE ALEXANDRINE (1981-85) 8831/81 (Neptun 421-type)

Built by VEB Schiffswerft "Neptun", Rostock for Blakenham Shg Corp. (Madrigal Shg Co. Inc., mgrs), Manila as SAINTE ALEXANDRINE. 1985 sold to Terpsichore Shg Co. Ltd, Panama r. MEREDITH E. 1987 sold to Seaways Co. Inc. (Soc de Gestion Evge S.A. mgrs), Piraeus r. FLORA. 5/90 mgrs Reefer & Gen. Ship Mgt., flag Panama r. FLORA V. 10/91 mgrs deleted r. CCNI ANCUD (same owners). 11/92 r. FLORA V. 7/93 r. CGM MANA. 3/94 r. FLORA V. 12/06 sold to Pol-Euro Shg Lines Ltd, Panama, later Basseterre r. SAFMARINE PALANCA. 11/10 r. FLORA V. 12/10 r. FLORA. 2/1/11 beached at Alang and 26/12 demolition began.



Brand new SAINTE ALEXANDRINE in Madrigal colours at Felixstowe, 1981 (Derek Sands@shipspotting).

SAINT VINCENT (1981-85) 11250/81 (b.c.)

Built by Minami-Nippon Zosen K.K., Usuki for Pina Armadora S.A. (A.P. Madrigal S.S. Co. Inc. mgrs), Panama as SAINT VINCENT. 1985 r. SAN VICENTE FERRER. 1987 sold to unknown owners r. ANNA K. 1987 sold to Cologne Shg Co. Ltd (Diana Shg Services S.A. mgrs), Limassol r. TARGA. 1988 sold to Century Shg Inc., Bombay r. ADITYA USHA. 1997 sold to Star Gemini Nav. Co. Ltd, Valetta r. STAR GEMINI. 2001 sold to Bolkar Denizcilik ve Tikaret Ltd Sirketi, Istanbul r. BOLKAR. 2009 sold to Seagull Shg Co. (Al Fadel Shg Co. Sarl mgrs), Panama r. SEAGULL D. 23/3/15 demolition commenced at Alang by Sheth Ispat Hussain.



BOLKAR (vesseltracker.com).

SAINTE MARTHE (1983-86) 9327/71 (extended 'SD-14' type)

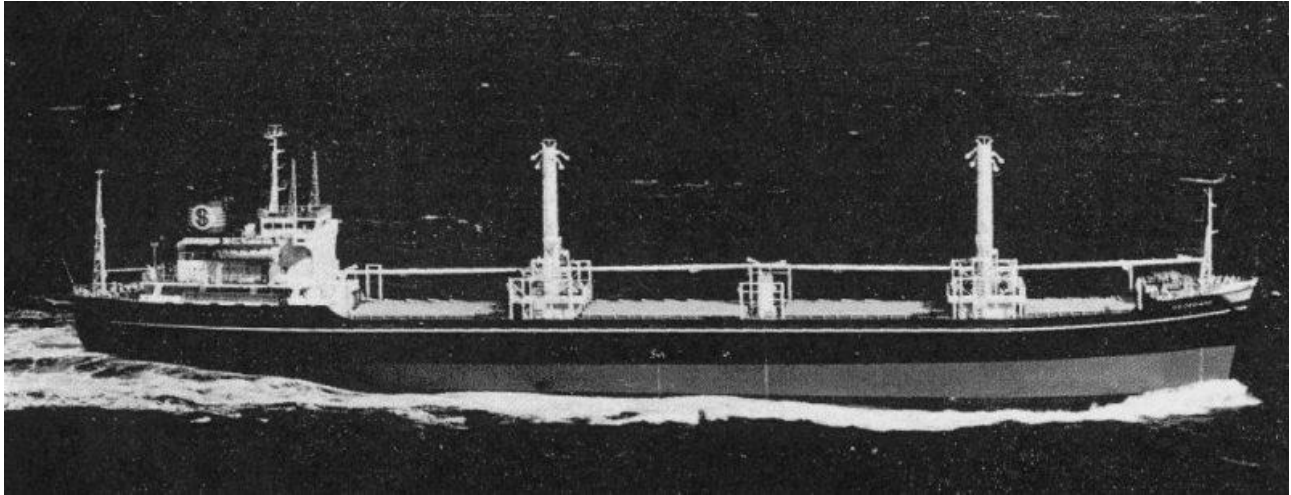
Built by Austin & Pickersgill Ltd, Sunderland for Mauritius S.N. Co. Ltd (Rogers & Co. Ltd, mgrs), Port Louis as BELLE ISLE. 1983 sold to Sealord Investments Inc., Liberia, later A.P. Madrigal Steamships Co. Inc., Manila r. SAINTE MARTHE. 1986 sold to Prometheus Inc. (Denholm Shipmanagement mgrs), Panama r. SARAH H. 1987 sold to Grafford Shg Co. Ltd (Citizen Shg Ltd, Hong Kong mgrs), Panama r. ALLMA. 1987 sold to Hakama Shg Ltd (Parakou Shg Ltd, Hong Kong mgrs), Panama r. BEIYUAN. 1988 sold to Qinhuangdao Shg Co., Qinhuangdao r. YUANG GUANG. 1993 sold to Vast Ocean Shg S.A. (Vastmetier Shg Co. Ltd, Hong Kong mgrs), Panama r. VAST OCEAN. 2/93 posted missing on voyage Vanino-Shanghai with steel bars, 15/2 last reported in 34.00N 129.22E.



SAINTE MARTHE as BELLE ISLE (SD14 - The Complete Story)

SAINTE MAXIMILIEN (1983-85) 9399/68 (b.c.)

Built by Sanoyasu Dockyard Co. Ltd, Osaka (#260) for Panamanian Marine Enterprises S.A., Monrovia (Eddie V. K. Hsu) as GEORGIANA. 1979 sold to Booth Shipping Ltd, Monrovia (Balbridge Enterprises Ltd, Hong Kong) r. VICTORIA. 1979 r. PETERSBERG. 1981 r. LOMBARDY. 1982 sold to Washington Maritime Co. Ltd, Panama r. ROYAN. 1983 sold to Dominion Shipping Corp. (A. P. Madrigal Steamship Co. Inc., mgrs), Manila r. SAINTE MAXIMILIEN. 1985 r. SAN MAXIMILIAN. 1986 t/f to Pina Armadora S.A., Panama r. SAINTE MAXIMILIEN. 1987 sold to Queen Jane Shg Inc., Panama r. QUEEN JANE. Missing since last reporting 23/10/87 in 23.53N 120.07E in bad weather on voyage Isabel, PI to Dalian with fertiliser.



GEORGIANA (builders).

PACIFIC CITI (1983-87) 9860/71

Built by Mitsubishi H.I., Shimonoseki (#703) for Tokyo Kaiji K.K., Tokyo as SENDAN MARU. 1977 sold to Greenville S.S. Corp., Liberia r. GREENFIELD. 1979 sold to Belfast Shg Ltd, Liberia r. BRIGHTON but resold same year to Bowes Shg Ltd, Liberia r. ENGLEWOOD. 1982 sold to Tuamoto Marit. Co. Ltd S.A., Panama r. TUAMOTU. 1983 sold to Dock Shg Corp., later Dominion Shg Corp. (A. P. Madrigal Steamship Co. Inc., Manila mgrs), Panama r. PACIFIC CITI. 1987 sold to Calliope Shg, Panama r. BOBO KW. 1989 sold to COSCO, China r. JIN HAI 11. 12/04 RLR as 'existence in doubt'.



JIN HAI 11 (Carimar@shipspotting).

SAN MAXIMILIAN (1985-86) 9399/68

see **SAINTE MAXIMILIEN** (1983-85)

SAN VICENTE FERRER (1985-87) 10670/81

see **SAINT VINCENT** (1981-85)

SAINTE MAXIMILIEN (1986-87) 9399/68

see **SAINTE MAXIMILIEN** (1983-85)

MADRIGAL INTEGRITY (1988-89) 14163/80

Built by Hayashikane Zosen, Shimonoseki (#1235) for Galleon Shg Corp., Manila as **GALLEON TOURMALINE**. 1983 t/f National Galleon Shg Corp., Manila r. **GALLEON INTEGRITY**. 1984 t/f to National Dev. Corp. (National Shg Corp. of the Philippines mgrs), Manila r. **NATIONAL INTEGRITY**. 1988 sold to Madrigal Shg Co. Inc., Manila r. **MADRIGAL INTEGRITY**. 1988 sold to Trade Pine Shg Inc., Panama r. **TRADE PINE**. 1994 sold to Defax Shg Co. Ltd, Cyprus r. **IOANNIS L**. 2002 sold to Nanjing Ocean Shipping Co. (COSCO Nanjing), St Vincent flag r. **GUANG HUA MEN**. 6/09 b/u at Xinhui by Zhongxin Ship Recycling & Steel. [*One of five sisters, three of which much later became NATIONAL DIGNITY, NATIONAL HONOR and NATIONAL PRIDE below.*]



MADRIGAL INTEGRITY as **GUANG HUA MEN** (Reiner Meulemen@shipspotting).

MINDORO BAY (1988-94) 9681/72

Built by A.G. "Weser" Werk Seebeck, Bremerhaven (#959) and launched for Rederi A/S Hadrian, Bergen as **APPIAN** but completed for Audin Reksten R/A, Bergen as **ARALUCK**. 1976 sold to Koninklijke Nederlandsche Stoomb. Maats. B.V., Amsterdam r. **BAARN**. 1986 t/f to Mercury Bay Inc., Panama r. **MERCURY BAY**. 1988 sold to A.P. Madrigal Steamships Co. Inc., Manila r. **MINDORO BAY**. 1994 sold to Manley Falmouth Shg Co. Ltd, Malta r. **MANLEY FALMOUTH**. 1995 sold to Cometas Shg Co. Ltd, Mariupol (Ukraine) r. **COMETAS**. Late-2001 Cyrillic **KOMETAC** painted up bows. 1/9/02 arrived at Alang for breaking up.



MINDORO BAY under the Dutch flag as BAARN (C.Howell@shipspotting).

NEGOTIATOR (1988-88) 23007/67 (b.c.)

Built by Van der Giessen de Noord B.V., Krimpen (#851) for Shg & Coal Co. Ltd, London as FORELAND. 1978 sold to Philippines International Shg Corp. r. ASEAN NATIONS. 6/83 reported sold for breaking in PRC but 1984 sold to National Investment & Devt Corp., Philippines r. NEGOTIATOR. From 5/84 laid up in Subic Bay. 5/88 sale arranged to Madrigal Shg Co. Inc., Manila, deposit paid, but seized by six Filipino pirates, sailed to Hong Kong and abandoned off Lamma island. 3/6/88 arrived Kaohsiung for demolition but 1989 resold by A.P. Madrigal Steamships Co. Inc. to Youcheng Shg (Panama) Inc., Panama r. YOUCHENG. Subsequent operations and fate unknown.

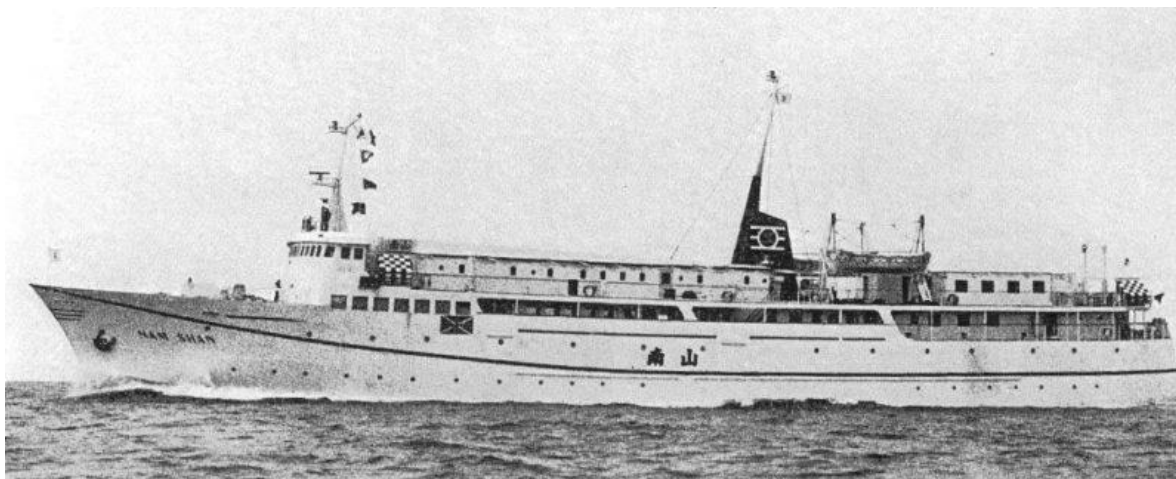


NEGOTIATOR as FORELAND (Ken Lubi@shipspotting).

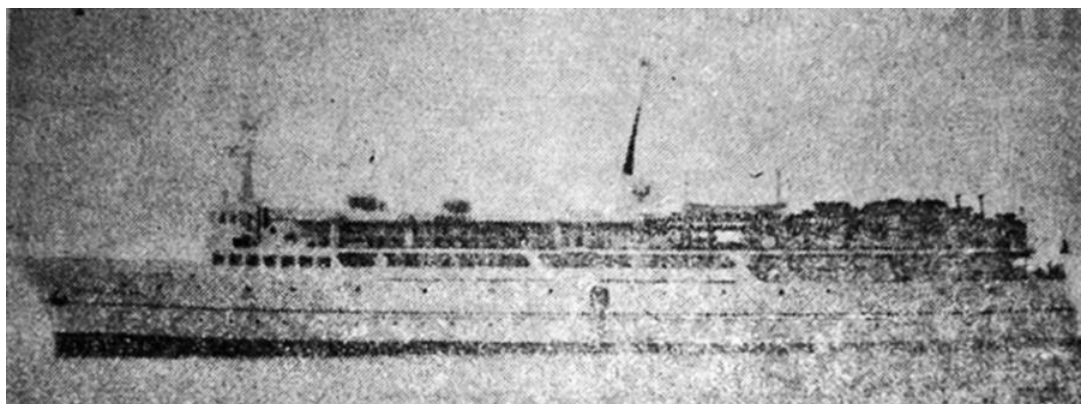
MADRIGAL ROMBLON (1989-93) 2136/72 see MADRIGAL TACLOBAN (1989-89)

MADRIGAL SURIGAO (1989-93) 2142/72 (ferry, 1112 pass)

Built by Niigata Eng. Co. Ltd, Niigata for Shun Tak Co. Ltd, Hong Kong as Hong Kong-Macao ferry NAM SHAN. 12/72 t/f to Ravenser Ent. Ltd, Hong Kong. 1989 sold to Grand Opportunity Ltd (A.P. Madrigal Steamships Co. Inc. mgrs), Manila r. MADRIGAL SURIGAO, operating Manila-Odiongan-Maasin-Surigao. 4/93 broken up.



MADRIGAL SURIGAO as NAM SHAN (builders).



MADRIGAL SURIGAO (*Manila Bulletin* 3/10/89).



MADRIGAL SURIGAO in PNOC Dockyard at Bauan, Batangas, March 1989 (edisonsy/Flickr).

MADRIGAL TACLOBAN (1989-89) 2136/72 (ferry, 1154 pass)

Built by Niigata Eng. Co. Ltd, Niigata for Tai Tak Hing Shg Co. Ltd, Hong Kong as Hong Kong-Macao ferry TAI SHAN. 1989 sold to Sankey Ent. Ltd (A.P. Madrigal Steamships Co. Inc. mgrs), Manila for \$800,000 r. MADRIGAL TACLOBAN but after route not approved r. MADRIGAL ROMBLON for Manila-Odiongan-Malay route. 4/93 broken up.



MADRIGAL TACLOBAN/ MADRIGAL ROMBLON as TAI SHAN (builders).

PUL SENTOSA (1989-90) 12752/67

Built by Verolme Cork Dockyard Ltd, Cork (#725) for South African Marine Corp. Ltd, Cape Town as S.A. NEDERBURG. 1975 lengthened and rebuilt as geared container ship. 1980 r. SAFOCEAN NEDERBURG. 1987 sold to Starfish Co S.A., (Mercury Shipping Co. Ltd, Hong Kong) Panama r. ANRO ADELAIDE for ANRO line Australia-Singapore-Malaysia. 1989 t/f to Philippine flag r. SINDBAD EXPLORER. 1989 sold to A.P. Madrigal S.S. Co. Inc., Manila r. PUL SENTOSA. 1990 sold to Bangladesh shipbreakers but 24/9/90 caught fire off Thai coast in 9.02N 97.32E during delivery voyage to Chittagong. Fire extinguished same day, vessel towed to Chittagong, arriving 6/10. 17/10/90 demolition commenced at Sitalpur by Hajee Shipbreaking Industries Ltd. [*Table Bay Underway Photo (SE) in MN 3/90 P.175*].



PUL SENTOSA as ANRO ADELAIDE (C.Howell@shipspotting).

MADRIGAL MASBATE (1990-94) 1992/71 (620 pass)

Built by Hayashikane Zosen, Nagasaki (Yard No.808) for Taiwan Nav. Co. Ltd., Kaohsiung as TAI PENG. 1990 sold to Cortes Shg Co. Ltd. (Reyes & Lim mgrs.), Panama r. MADRIGAL MASBATE for Manila/Catbalogan/Tacloban route. 1994 sold to SKT Shipping, Zamboanga r. PAGADIAN CITY for

Zamboanga/Pagadian route. Owners later Kong San Teo (KST) Shipping Line. Still listed for SKT in LR 2022/23, but continued existence unlikely. [LR/Miramar say sold to SKT Shg in 2004 when renamed, but 1994 date is stated in <https://psssonline.wordpress.com/tag/compania-maritima/>.]



MADRIGAL MASBATE as TAI PENG (builders).



Above 2: Subsequently as PAGADIAN CITY, Zamboanga January 1997 (coll. J. van Delden*).

PASIG RIVER (1990-92) 6126/73 ('Ozean' type)

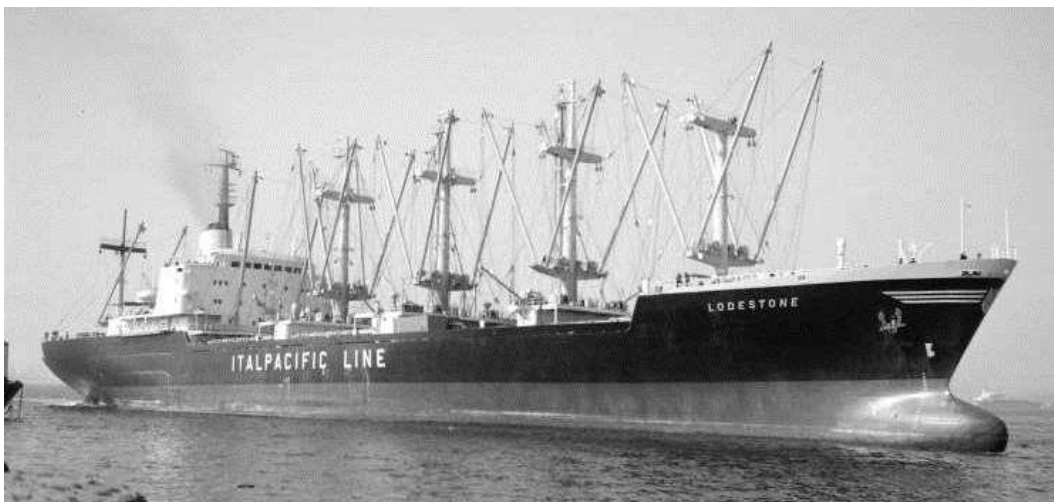
Built by Warnowwerft, Warnemunde (#380), launched for Lars Rej Johansen, Norway as JOMARA but completed for N.V. Maats. tot Voortzetting van der Koninklijke Hollandsche Lloyd, Amsterdam as FLEVOLAND. 1982 t/f to KHL Lijnen B.V. (Nedlloyd Lijnen mgrs) r. NEDLLOYD FLEVOLAND. 1983 r. FLEVOLAND. 1985 t/f to Roving Hero Shg Inc. (Mercury Shg Co. Ltd, Hong Kong mgrs), Panama r. SINDBAD MARINER. 1987 r. MERCURY GULF. 1989 t/f to Norfolk Co. Inc., Vanuatu r. MERCURY RIVER. 1990 sold to A.P. Madrigal Steamships Co. Inc., Manila r. PASIG RIVER. 1/4/92 arrived at Chittagong for demolition and 14/5/92 work commenced by Bangladesh Steel Ent., Bhatiary.



PASIG RIVER as FLEVOLAND (Gianpaulo@shipspotting).

TAAL LAKE (1991-92) 10234/70

Built by Howaldswerke-Deutsche Werft, Hamburg (#2) for Lodestone Shg Corp. (Vlaslov Group), Monrovia as LODESTONE, chartered to Ital Pacific Line for Savona-Vancouver service. 1972 sold to Koninklijke Nederlandsche Stoomb. Maats. N.V., Amsterdam r. AMERSFOORT. 1981 r. LLOYD AUCKLAND. 1982 t/f to Nedlloyd Rederijdiensten B.V., Amsterdam r. NEDLLOYD AMERSFOORT. 1989 t/f to Roxburgh Shg Inc. (also reported as Ace River Co. Inc.), Port Vila r. MERCURY SKY. 1991 sold to A.P. Madrigal Steamships Co. Inc., Port Vila r. TAAL LAKE. 2/7/92 arrived Chittagong for demolition and 4/7/92 work commenced by Rashed Ent. at Bhatiary.



TAAL LAKE as LODESTONE (Paul Wille@shipspotting).

MADRIGAL HARMONY (1996-?) 4089/74

Built by S.A. Juliana Const. Gijonesa, Gijon (#213) for Naviera del Atlantico S.A., Las Palmas as DELFIN DEL MEDITERRANEO. 1991 sold to Goldpath West Shg Co. Inc., Panama r. TROPICAL PRINCE. 1996 sold to Madrigal Transport Inc., Manila r. MADRIGAL HARMONY. Still as such LR 2023/24 but continued existence doubtful.



MADRIGAL HARMONY as DELFIN DEL MEDITERRANEO (Gianpaulo@shipspotting).

ALICIA (1997-98) 16885/83

Built by Stocznia Gdanska im. Lenina, Gdansk (#b349/02) for Flota Mercante Grac Colombiana S.A., Isla de San Andres (Colombia) as REPUBLICA DE COLOMBIA. 1995 sold to Chara Shg Inc., Philippines r. ARTEMISION. 1997 sold to Madrigal Transport Inc. (Madrigal/Wan Hai Lines mgrs), Manila r. ALICIA. 1998 sold to Sea Ariadni Shg Ltd, Cyprus r. CYBORG. 6/3/01 damaged by fire in 36.39N, 2.02W. 24/9/01 arrived at Alang for breaking. [check address for Chara Shg].



ALICIA as REPUBLICA DE COLOMBIA (Brian Fisher@shipspotting).

NATIONAL DIGNITY (1999-2003) 13228/81 (b.c.)

Built by Naikai Zosen, Setoda for Galleon Shg Corp., Manila as GALLEON AGATE. 1983 t/f to National Galleon Shg Corp., Manila r. GALLEON DIGNITY. 1984 t/f to National Devt Corp (National Shg Corp. of the Philippines mgrs), Manila, later National Devt Co., Manila r. NATIONAL DIGNITY. 1999 sold to Madrigal Shg Co. Inc. & Wan Hai Lines Ltd (Madrigal Wan Hai Lines), Manila. 2000 t/f to Trans Pacific Lines Ltd (c/- Knights of Rizal Bld, Manila), Hong Kong. 2003 sold to Fairmont Shg (Canada) Ltd, Hong Kong. 2004 r. OBI LEADER. 2005 r. NATIONAL DIGNITY. 2006 sold to Hongli Shg Co. Ltd (Hongyuan Marine Co. Ltd mgrs), Kingstown (St. Vincent & Grenadines) r. HONG SUCCESS. 26/8/11 beached at Alang for demolition by Saibaba Ispat.



HONG SUCCESS (gunesgur@marinetraffic.com).

NATIONAL HONOR (1999-2003) 13228/80 b.c.

Built by Hitachi Zosen, Innoshima for Galleon Shg Corp., Manila as GALLEON DIAMOND. 1983 t/f to National Galleon Shg Corp, Manila. r. GALLEON HONOR. 1984 t/f to National Dev. Corp (National Shg Corp. of the Philippines mgrs), Manila, later National Dev. Co., Manila r. NATIONAL HONOR. 1999 sold to Madrigal Shg Co. Inc. & Wan Hai Lines Ltd (Madrigal Wan Hai Lines), Manila. 2000 t/f to Trans Pacific Lines Ltd (c/- Knights of Rizal Bld, Manila), Hong Kong. 2003 sold to Fairmont Shg [Canada] Ltd mgrs, Hong Kong. 2007 sold to Hongli Shg Co. Ltd (Hongyuan Marine Co. Ltd mgrs), Kingstown (St. Vincent & Grenadines) r. HONG LUCK. 2/12/11 demolition commenced at Alang.



NATIONAL HONOR (Andreas Schlatterer@shipspotting).

NATIONAL PRIDE (1999-2003) 13228/81 b.c.

Built by Hitachi Zosen, Innoshima for National Galleon Shg Corp., Manila as GALLEON EMERALD. 1994 r. GALLEON PRIDE. 1984 t/f to National Dev. Corp (National Shg Corp. of the Philippines mgrs), Manila, later Nat. Dev. Co., Manila r. NATIONAL PRIDE. 1999 sold to Madrigal Shg Co. Inc. & Wan Hai Lines Ltd (Madrigal Wan Hai Lines), Manila. 2000 t/f to Trans Pacific Lines Ltd (c/- Knights of Rizal Bld, Manila), Hong Kong. 2003 sold to Fairmont Shg (Canada) Ltd, H.K. 2007 sold to Hongli Shg Co. Ltd (Hongyuan Marine Co. Ltd mgrs), Kingstown (St. Vincent & Grenadines) r. HONG PROSPERITY. 11/8/11 beached at Alang for demolition by Rai Metal Works.



HONG PROSPERITY (Wil Weijsters@shipspotting).

-o00000000000000o-