

# Passenger Ships of the Shanghai Maritime Bureau (Part 2)

Including

Zhe Hai series

Zhe Jiang Series

‘Chang’ Class (10 vessels + 2 Guangzhou Bureau)

‘Xin’ Class (8 vessels + catamarans RUI XIN and RUI CHANG)

BAI LING 百灵 and XI QUE 喜鹊

## ILLUSTRATED FLEET LIST

By Stephen Kentwell and Howard Dick

All Rights Reserved 2019, 2022

[skentwell@hotmail.com](mailto:skentwell@hotmail.com)

[h.dick@unimelb.edu.au](mailto:h.dick@unimelb.edu.au)

\*May be cited with acknowledgement to [www.oldchinaships.com](http://www.oldchinaships.com)\*

This update posted 14 April 2022

For large passenger ships from the 1950s with **MIN CHU** names and the 1960s with **GONG NONG BING** names, see the separate Part 1 (MIN CHU series) list (q.v.)

Similarly, see the separate Dalian Maritime Bureau list (q.v.) for the following seven ships:

**TIAN SHAN** 天山 4299/74

**TIAN HUA** 天华 4290/76

**TIAN CHI** 天池 5002/81

**TIAN HU** 天鹏 5002/81

**TIAN TAN** 天潭 5002/82

**TIAN HUAI** 天淮 5002/83

**TIAN HE** 天河 5492/83.

Zhoushan and Ningbo services, later assigned to Zhejiang Province Shg. Co.

**HAI XING 海星**(1961-??) 1239 dw

Following approval by Premier Zhou Enlai, fisheries vessel converted in late 1961 for the Shanghai/Zhoushan passenger service, and in service for several decades. As at 12/93 a vessel of this name operating Shanghai/Shenjiamen/Mawei (Fuzhou).



China Pictorial 1961



HAI XING as later modified with deckhouse aft (Xinhua).

**ZHONG ZHE 1** 1980 r. **ZHE JIANG 601**. 1984 r. **ZHE JIANG 811**.



**ZHE JIANG 601**



Similar, unknown location (internet).

**ZHE HAI 602 (?)** 195/70 Shanghai Shipyard, Shanghai  
1989 became **TIAN \_\_\_\_** of Ningbo Tptn. Co., Ningbo

**ZHE HAI 603** 841/70 Hudong Shipyard, Shanghai  
Ex **LU MING YI HAO (LU MING 1)**.  
1989 became **TIAN YI** of Ningbo Tptn. Co., Ningbo

**ZHE HAI 604** 1884/75 Jiangnan D & E Works, Shanghai  
1989 became **TIAN FENG** of Ningbo Tptn. Co., Ningbo. Still in LR 2011 but not there as such 2013.  
No longer existing by 2015.





ZHE HAI 604 (China Pictorial).



ZHE JIANG 815 and ZHE JIANG 604 at Dinghai in 1980 (Internet).



ZHE HAI 604 as TIAN FENG at Shanghai on 19 October 2000 (SK\*)



TIAN FENG at Shanghai on 21 October 2000. No vessels of this class were seen at Shanghai over an extended period in 2002 (SK\*).



TIAN FENG (reg. Ningbo) and FAN XIN (H. Furukawa/*Ships and Ports*).

**ZHE HAI 605** 685/83 Wenzhou Shipyard, Wenzhou  
1989 became TIAN TONG of Ningbo Tptn. Co., Ningbo. 2015 RLR.

**ZHE HAI 607** 187/76 Zhoushan Shipyard, Zhoushan  
1989 became TIAN FEI of Ningbo Tptn. Co., Ningbo. Still in LR 2011 but not there as such 2013. No longer existing by 2015.



**ZHE JIANG 402** (number indistinct)



ZHE JIANG 402 at Ningpo (China Pictorial)



Shanghai 1982-83 (Chris Mackey CM1-0938).

**ZHE JIANG 403** Details not available.



ZHE JIANG 403 at Shanghai (H. Furukawa/*Ships and Ports* 1/82).



Above 2: ZHEJIANG 403 in June 1982 (Chris Mackey).

**ZHE JIANG 404** Details not available.



ZHE JIANG 404 in 1980s (J. van Delden/*Ships and Ports* 1/82).



**ZHE JIANG 601** see ZHONG ZHE 1 above

**ZHE JIANG 801** ???/??



at Shanghai 1973 (Harrison Forman).

<https://collections.lib.uwm.edu/digital/collection/agsphoto/id/32539/rec/81>



ZHE JIANG 801 at Shanghai (SK\*).

**ZHE JIANG 802** ???/??



ZHE JIANG 802 (with smaller mast) at Shanghai 1982-83 (Chris Mackey CM1-0928).



**ZHE JIANG 806** Catamaran type



Pub. 1988 (*Ships of China*).

**ZHE JIANG 811** see ZHONG ZHE 1 above

**ZHE JIANG 815**

Details not available.



ZHE JIANG 815, presumably when new, in the Cultural Revolution period (Internet).



ZHE JIANG 815 (Internet).



ZHEJIANG 815 at Ningpo on 4 June 1981 (7788.com).



ZHE JIANG 815 at Shanghai on 21 October 2000 (SK\*)



**MIN ZHUI / PU TUO SHAN 普陀山 (c.1981-83) 4895/61**

Built by Burmeister & Wain A/S, Copenhagen for A/S Dampskibsselskab paa Bornholm af 1866, Ronne as BORNHOLM for Ronne/Copenhagen route and cruising. 10-12/63 charter voyage Southampton/Tristan de Cunha repatriating evacuees from a volcanic eruption. 1-3/65 major refit by B&W. 12/80 sold to COSCO, Shanghai, r. MIN ZHUI, later r. PU TUO SHAN for Shanghai/Zhaoshan service (until 30/4/01). 1983 sold to Zhaoshan Shg. Co., Zhejiang. 12/5/01 arrived Chang Shun Ship Demolition Co. for breaking.



MIN ZHUI



PU TUO SHAN

**NAN HU 南湖(1985- 97) 2827/52**

Built by Burmeister & Wain, Copenhagen for A/S Dampskibsselskabet på Bornholm af 1866, Copenhagen as KONGEDYBET (2314g). 1958 superstructure enlarged. 1973 owners Bornholmstrafikken. 1979 sold to COSCO, Guangzhou r. BAO FENG, evidently laid up, windows shuttered. 1980 t/f to Guangdong Province, Hong Kong and Macao Navigation Co. Ltd., Guangzhou r. DING HU, operated Hong Kong/Shantou. 1985 sold to Zhoushan State owners, r. NAN HU, operated Shanghai/Dinghai. 1997 “retired on Chongming Island”.



NAN HU at Shanghai 11/85 (Y. Ikeda).



Presumed retirement at Chongming Isl.(VilleDeTanya).

### **ZHONG SHAN** Catamaran type



Pub. 1988 (*Ships of China*).



**PENG LAI 蓬莱** (1987-??) 2239/87 Shanghai Zhoughua Shipyard, Punan

Built as PENG LAI for Shanghai/Zhoushan service. Later ownerships including Zhoushan Haixing Shg. Co. and subsequently Zhoushan Shg Co., vessel reported broken up by 2014, possibly considerably before, given larger additions to ZSC fleet in 1990s.



PENG LAI



PENG LAI at Shenjiamen

(<http://m13585591914.blog.163.com/blog/static/24724412420145228430690>).

**ZHE JIANG 406** (1990-??) 2811/90-10 728 pass 78 (o.a) 70x14x4.7x7.1

12/98 sold to Zhoushan Shg. Co. Ltd. r. ZHI ZHOU LIN 紫竹林.18/12/04 sold to Zhoushan Haixing Ferry Co., 5/05 r. PU TUO SHAN 普陀山.



Above 3: Same ship succesively as ZHEJIANG 406, ZHI ZHOU LIN - at Shanghai 30 April 2002 - (SK\*) and PU TUO SHAN



**NAN HU 南湖** (1997-9?) 4803/83-12, Shanghai Diesel

Built by Guangzhou Shipyard, Guangzhou (#424-1) for Guangzhou Maritime bureau as MA LAN 马兰. After trials, delivered 2/84 and in service Guangzhou and Hong Kong to Haikou. 1994 r. HUA SHEN 华神, operated Hong Kong/Haikou. 1997 sold to SMB for Shanghai/Ding Hai service r. NAN HU. Late 1990s conv. for Da Hong Ying Trade Co. Inc., Zhoushan (4400 g) r. DA HONG YIN 大红鹰. 6/03 sold to owners in Weihai, later r. XIN SHENG SHENG 新生生. Presumed withdrawn from service 2013.



The second NAN HU as MA LAN and later as DA HONG YING

### Chang Class

12 CHANG class, built Shanghai Shipyard Co. Ltd, Pudong 1971-81 138.2x17.6x8.4x6 gt 5926 cargo 2000 tons, pass 856 engines 9ESDZ43/82x2, 2x3310hp, 17kt 3500 nautical miles

First seven built in the revolutionary period, quality not so good. The next three vessels identifiable by a closed promenade deck. A further two vessels of the latter class, WAN NIAN HONG 万年红 and ZHEN ZHU MEI 珍珠梅 were built in 1984 for the Guangzhou Bureau. Used on coastal services from

Shanghai to Dalian, Qingdao, Xiamen, Guangzhou routes. Apart from the rebuilt LU HANG JIA, none of this class was sighted at Shanghai in 2000, 2002 or during subsequent visits.

**CHANG ZHENG 长征** (1971-91) 5926/71 23/5/94 Engine room fire after sailing for Dalian with 760 pass and 99 crew, burnt out at Shanghai Huangpu ferry pier, b/u.



CHANG ZHENG launch and on completion (Hudong Shipyard).





CHANG ZHENG was built with cranes forward and aft, as shown in original drawings and a 1972 postage stamp (Shanghai Shipbuilding History).



CHANG ZHENG's forward cranes were subsequently replaced by containers



CHANG ZHENG at Shanghai 1982-3 (Chris Mackey).





CHANG ZHENG at Dalian with partially grey superstructure

**CHANG SHAN 长山** (1973-96) 5926/73 Reported b/u 1996



At Nantao Bund, 1973 (Harrison Forman, UWM Libraries).



Early view of CHANG SHAN, no cargo handling gear evident  
(Ted Scull *Steamboat Bill* Winter 1979).





CHANG SHAN at Shanghai 1982-3 (Chris Mackey).

**CHANG HE 长河** 5926/74



CHANG HE at Shanghai, missing kingposts & crane (H. Furukawa/*Ships and Ports* 1/82)



CHANG HE (<http://m13585591914.blog.163.com/blog/static/247244124201109900621>).





Above 2: CHANG HE at Shanghai 1982-3 (Chris Mackey).



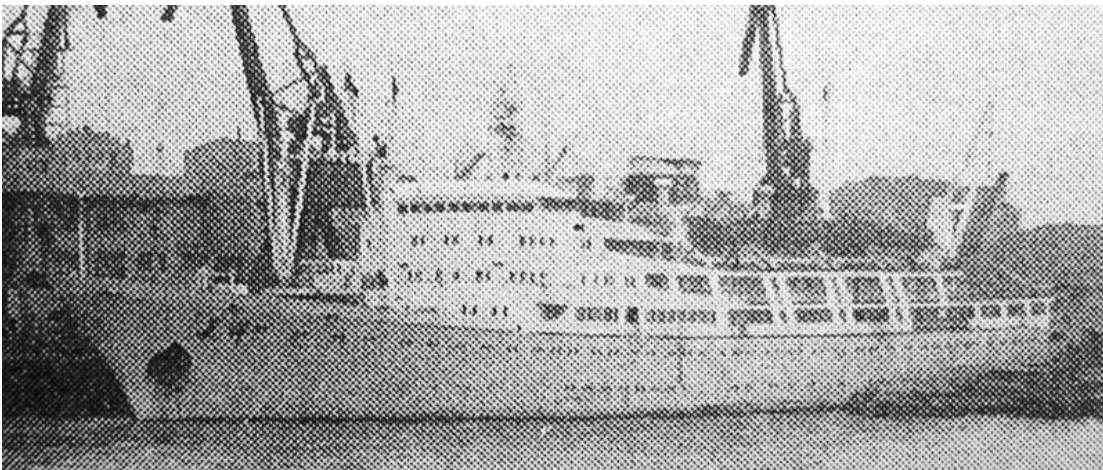
CHANG HE at Dalian 6/91, light kingposts (cracker1935@shipspotting).



**CHANG JIN 长锦** 5926/74



Launch of CHANG JIN in 1974 (<http://blog.ifeng.com/article/30554173.html>).



CHANG JIN at Shanghai in December 1985 (Y. Ikeda, *Ships of the World* 5/86).

**CHANG XIU 长绣** 7214/74 also 5926/74



CHANG XIU at Shanghai in July 1985 (*Ships of the World* 10/85).

**CHANG ZI** 长自 6818/75 Hudong. 5/87 operating Shanghai/Tsingtao 22/6/96 demolition begun at Alang by Jaibharat Steel.



CHANG Zi on launch day, indicating forward kingposts, mainmast and crane aft. Bulk carrier alongside is SHENZHOU.



Launch of CHANG ZI



CHANG ZI (997788.com).





CHANG ZI evidently retrofitted with derricks aft (Donald Anderson).



Chang class, name possibly CHANG ZI at Dalian, in the colours of China Shg. Passenger Liner Co Ltd.

**CHANG LI** 长力 (1976-96) 5926/76 also quoted as 6818/76, 5926/77. 15/6/79 sailed Whampoa for Vietnam to repatriate Chinese nationals. Reported b/u 1996.



CHANG LI without cargo gear (T. Shimizu/Ships and Ports 1/82).



CHANG LI at Shanghai 1982-3 (Chris Mackey).





CHANG LI at Putong 17/5/87 (*Ships of the World* 9/87).

**CHANG SHENG** 长生 5925/79 Likely b/u c.1996.

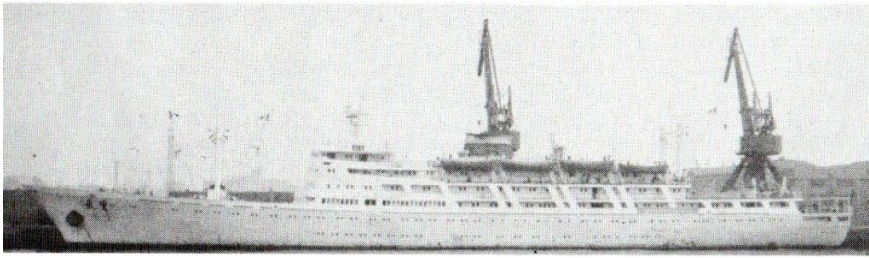


CHANG SHENG fitting out (Ted Scull *Steamboat Bill* Autumn 1979).



CHANG SHENG at Shanghai (T Shimizu/*Ships and Ports* 1/82).





CHANG SHENG (H. Furukawa/*Ships and Ports* 1/82).



At Shanghai, name indistinct but plausibly CHANG SHENG



CHANG SHENG near mouth of Yangtse 17/5/87 (*Ships of the World* 9/87).



**CHANG GENG 长更** (1979-96) 5926/79 Reported b/u 1996.



(Ted Scull Steamboat Bill Winter 1979).



CHANG GENG (Chief Engineer).



CHANG GENG (Shanghai Bureau pub.1980).





CHANG GENG At Shanghai 1982-83 alongside pioneer cargo ship ZHANDOU 28 (Chris Mackey).

**CHANG SONG** 长松 7669/80 2015 reported for sale.

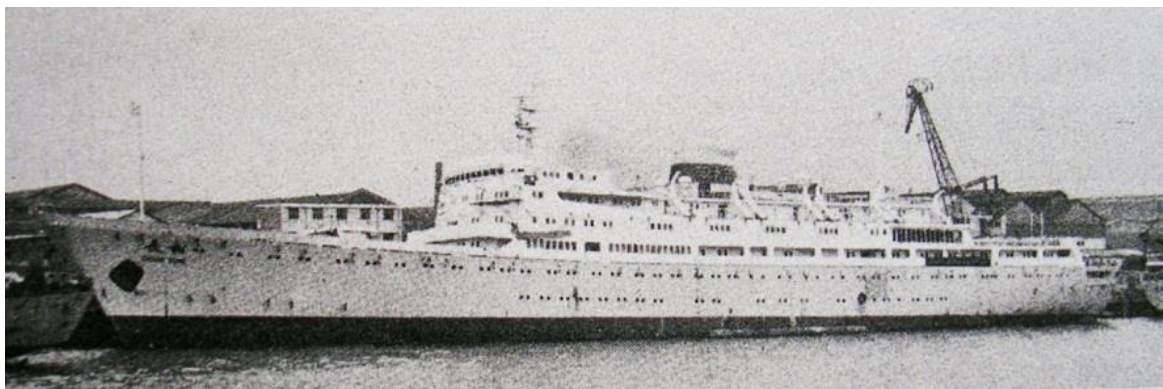


CHANG SONG at Shanghai July 1979 (Markus Berger).



CHANG SONG without cargo handling gear at Shanghai 1982-3 (Chris Mackey).





CHANG SONG at Shanghai (H. Furukawa/*Ships and Ports* 1/82).



CHANG SONG at Shanghai 1982-3 (Chris Mackey).



CHANG SONG at Shanghai 1982-83 (Chris Mackey).





CHANG SONG at Shanghai 30/4/87 (simonwp@shipspotting).



CHANG SONG class vessels under construction at Shanghai Shipyard Co. Ltd Pudong works in 1980 (SK colln).

**CHANG BAI** 长柏 7670/80 Akaiwa (1991) lists this vessel for the international-oriented Shanghai Haixing Shg Co. Ltd. 2015 reported for sale.



CHANG BAI off Qingdao 18/5/87 (*Ships of the World* 9/87).



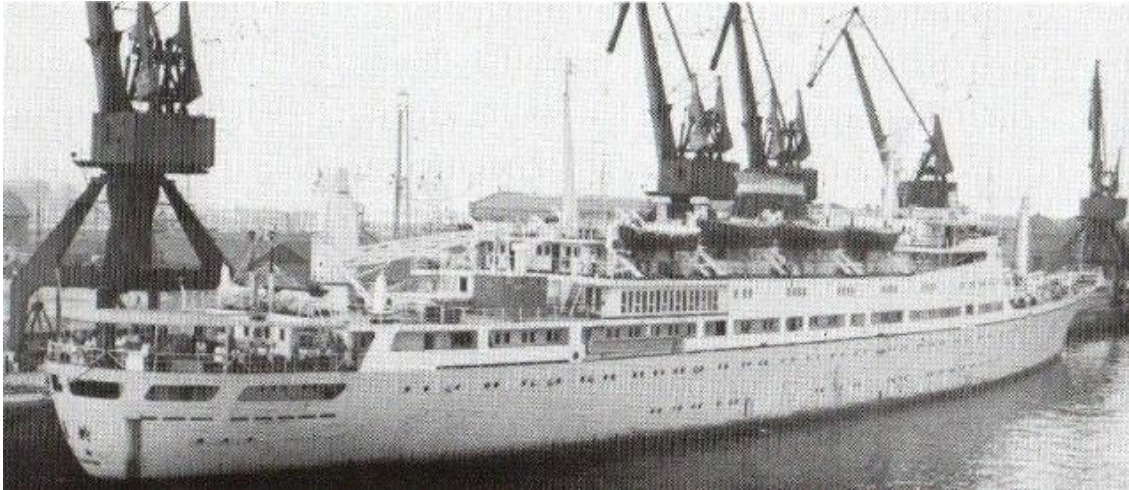
Probable CHANG BAI under maintenance

**CHANG LIU** 长柳 7670/81 By 2007 (LR erroneously says 2010) r. LU XING JIA 旅行家 then 2010 ORIENTAL QUEEN (东方女王 – DONGFANG NUWANG). Still listed LR2015 for Zhejiang East Haihong (HK) Steamship Dev. Co. Ltd. (Guangxi Beibu Gulf Terminals Co. Ltd., mgrs.), no port or flag.



CHANG LIU in original colour scheme (H. Furukawa/*Ships and Ports*).





CHANG LIU (H. Furukawa/*Ships and Ports* 1/82).



CHANG LIU with new funnel scheme (Internet)



CHANG LIU (Internet).





Ex-CHANG LIU in new cruise guise as LU XING JIA in 2007 (Internet).



LU XING JIA, Roman lettering removed (Internet).



LU XING JIA ex-CHANG LU under refit at Shanghai 2/5/09 (SK\*).





LU XING JIA ex-CHANG LU bearing the name 'ORIENTAL QUEEN' in lettering (Internet).



ORIENTAL QUEEN (東方女王, DONGFANG NUWANG) ex LU HANG JIA ex-CHANG LU, probably under a foreign flag (Internet).

Other CHANG class photos



HUA JING, seemingly built with plating salvaged from a Chang class passenger ship. (C. Howell).





Shanghai postcard scene



CHIANG SONG and CHANG ZHENG



CHANG class at Dalian in 1970s with the ex-YUEN SANG (1923)



### Xin class

Class of eight, built 1976-86 Used on routes from Shanghai to Ningbo, Wenzhou and Fuzhou. 106.67x15.8x7.7 gt 3858, cargo 140 tons, passengers 915; engines 6ESDZ43/82x2 4410hp 15.5kt. Ninth and tenth ships JIANG XIN 将新 and LAI XIN 来新 were cancelled. For QIU XIN see RONG XIN below. The first characters of the names can be arranged to make a sentence "庆贺繁荣昌盛展望鸿茂将来" which translates as "Looking to celebrate future prosperous general luxury."

**FAN XIN 繁新** 3858/76 also 3858/77 Qiuxin Shipyard



FAN XIN (H. Furukawa/Ships and Ports 1/82).



FAN XIN in Singapore waters 5/97, probably en route breakers (Marc Piche).

**RONG XIN 荣新** 3858/78 Qiuxin Shipyard

Name read as RONG XIN or YONG XIN. Said to be ex QIU XIN. Still listed in Akaiwa (1991). Later to China Shg. Passenger Liner Co Ltd., rebuilt.



RONG XIN (Ted Scull *Steamboat Bill Winter* 1979).



RONG XIN (H. Furukawa/*Ships and Ports* 1/82).





RONG XIN



RONG XIN of China Shg. Passenger Liner Co Ltd.

**CHANG XIN 昌新** 3858/79 Qiuxin Shipyard





CHANG XIN (Markus Berger).



CHANG XIN Internet).



CHANG XIN (*Ships of China*).

**SHENG XIN 盛新** 3858/80 also 3838/79 Qiuxin Shipyard



(Y. Fukawa).



MAO XIN 茂新 3858/81 Qiuxin Shipyard



MAO XIN on 1/1/88 (Tony Martin@Shipspotting).



MAO XIN, presumably at Wenzhou (Xinhua).



MAO XIN (VilleDeTanya).



**HONG XIN 鸿新** 3858/83 Qiuxin Shipyard (CCS booklet says built 1982)



HONG XIN (Chinese Classification Society 30 year booklet).



HONG XIN (H. Furukawa/*Ships and Ports*).



HONG XIN (Arne Sognnes).



**ZHAN XIN 展新** 3858/84 Qiuxin Shipyard 915 pass

1998 converted by Guangzhou Boluo Shipyard to cruise ship XIN SHANGHAI of China Shg. Passenger Liner Co Ltd. (Shanghai Marine Group), Shanghai. 14/8/98 maiden voyage Shanghai/Cheju. 1/10/98 first voyage Shanghai/Shengsi/Dongtou. Also voyages Shekou/Haikou. 25/5/04 completed conversion by Shanghai Changnan Dockyard to Shanghai pilot vessel HU GANG YIN 1 沪港引.



ZHAN XIN (Ville deTanya).



XIN SHANGHAI (Ville de Tanya).



HU GANG YIN 1 (Rosenkranz Shipphotos).

**WANG XIN 望新** 3858/86 also 3858/84 Qiuxin Shipyard







WANG XIN in 3/95 (both Markus Berger).



Unidentified XIN class in original configuration at Ningpo showing funnel colours of China Shg. Passenger Liner Co Ltd.

[Also see earlier **QING XIN** 庆新, **JIAN XIN** 健新 (both ex MIN CHU 18) and **HE XIN** 贺新 (ex MIN CHU 19), in the Part 1 (MIN CHU) list.]

### RUI XIN and RUI CHANG

Class of two catamaran-type coastal passenger vessels built by Jiangzhou Shipyard, RUI XIN in 1985. 86.0x26.0x8.2x4.92 meters. 2x diesel engines by Shanghai Hudong Shipyard, 3000hp, 15.5k. Designed by Shanghai Transportation University, used on Shanghai-Wenzhou and associated routes.

**RUI XIN 瑞新** 7128/85 1510 pass

Built by Jiangzhou Shipyard, Jiangzhou. Not listed by Akaiwa (1991).



RUI XIN (*Ships of the World*).



Presumed RUI XIN on first arrival at Wenzhou (Huang Bang-fa).





RUI XIN (Markus Berger).



RUI XIN with a light blue hull

### **RUI CHANG 瑞昌 7128/85**

Built by Jiangzhou Shipyard, Jiangzhou. Still listed by Akaiwa (1991).



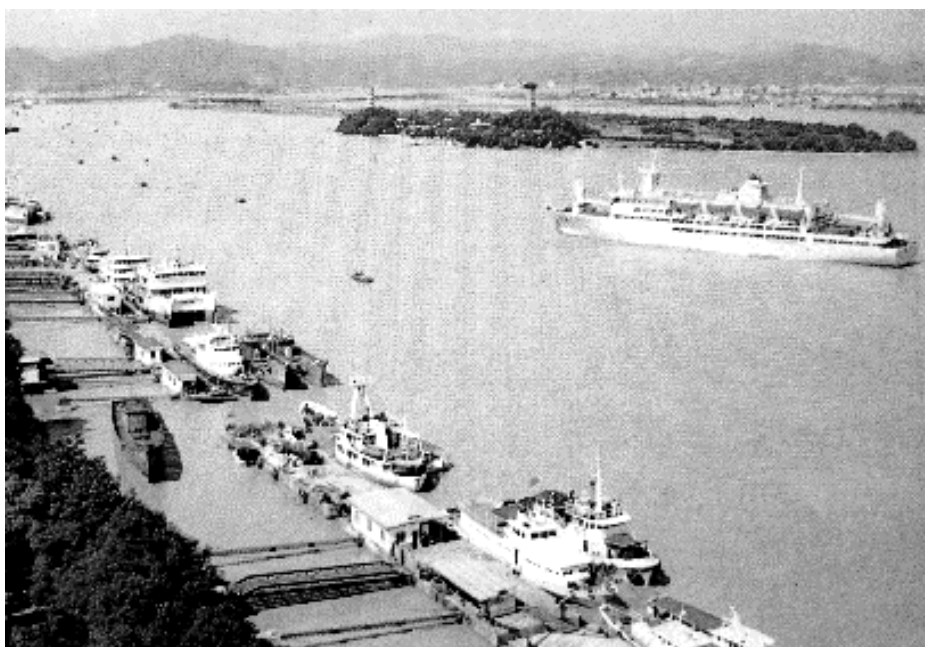
RUI CHANG launch day (Internet).



RUI CHANG

#### BAILING and XIQUE

Class of two built 1986-7 for Shanghai Maritime Bureau, Shanghai-Wenzhou and Shanghai-Ningbo, sometimes Shanghai-Qingdao. 5000 tons displ., 1400 pass. at times. 120x18.8x9.6x5.2 meters; 7160g, capacity 1302 pass, cargo 500 tons (also quoted as 1334 pass, 78TEU); 2xdiesel engines by Shanghai Hudong Shipyard, 3400hp, 16.3k. Cabins one, two, three, four berth, full air-conditioning.



At Wenzhou

**BAI LING 百灵** ('Lark') 7160/86 also 7160/87 Xingang, Tianjin

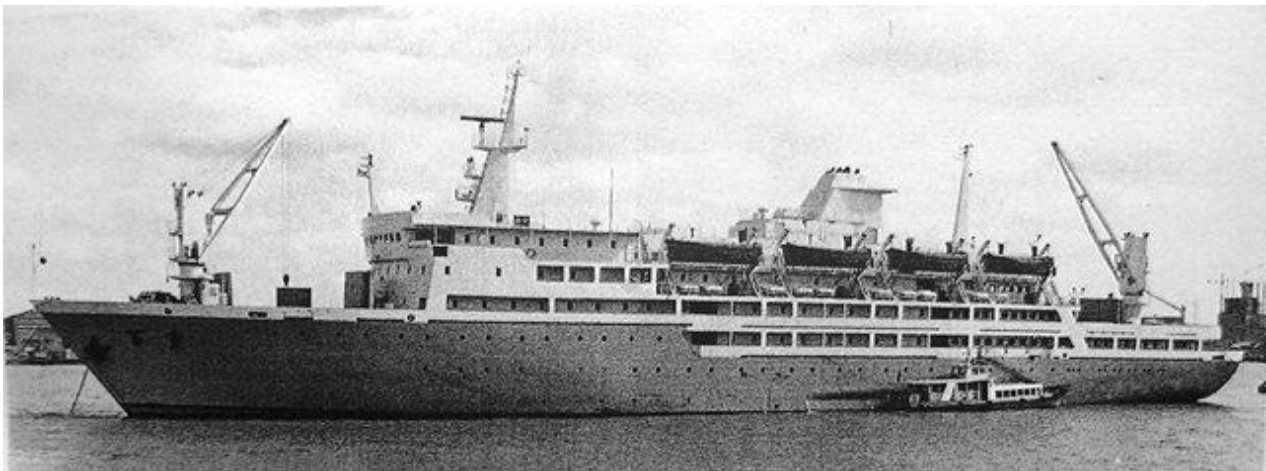
First arrival Wenzhou 12/11/87. 1/1/01 converted into 420 pass cruise ship of Enn Marine Co. r. JIA RI. 1/9/06 to Shanghai Wanbang Cruise/Shanghai Intercontinents, Pa. flag, detained in Beihai.



Subsequently (date uncertain) r. GLOBETROT PRINCESS. 4/1/09 Baibu Gulf International Tourism, Sierra Leone. 1/8/10 Enn Marine Shg, Cambodia. 12/1/13 reverted to Shanghai Wanbang Cruise as JIA RI, detained in Humen. Silll listed LR 2015 and subsequently, but no owners or port of registry. 2018 sold for breaking in Alang, transiting Singapore 18/2/18 in tow of *Salviceroy*.



BAI LING at Shanghai 17/5/87 (*Ships of the World* 9/87).



BAI LING (*Ships of China*).





JIA RI ex BAI LING



Cambodian-flag GLOBETROT PRINCESS orig. BAI LING (Bogdan Kocemba).

**XI QUE 喜鹊** ('Magpie') 7160/87 Xingang, Tianjin

Later Zhoushan (?) route WU TONGSHAN 梧桐山, later Shanghai pilot ship HU GANG YIN 2 沪港引  
2.



XI QUE (Markus Berger).





XI QUE (Internet).



XI QUE at Wenzhou (Internet).



WU TONGSHAN, named after a mountain at Shenzhen, Guangzhou (Internet).



HU GANG YIN 2 ex XI QUE lowering a pilot launch (internet photos).

-----