

DONG FANG HONG series Yangtse Passenger Ships of Post-1949 Origin

(Newly built by the PRC, excluding cruise ships)

1949 年以後的“东方红”系列长江轮船

ILLUSTRATED LIST

By Stephen Kentwell

All Rights Reserved October 2019, 2022 and 2024

skentwell@hotmail.com

May be cited with acknowledgement to the author at www.oldchinaships.com

This update posted 22 January 2024

Under executive order of the Changjiang (Yangtse) Shipping Corp., effective 25/11/66, the beginning of the Great Proletarian Cultural Revolution, all large Yangtse passenger vessels with JIANG and MIN names were immediately renamed in a new DONG FANG HONG (DFH) – “The East is Red” – naming series. Subsequent newly constructed ships were also named in the DFH series which is used as the original basis for this list.

In the Mao period nine large Yangtze river steamers were built. These nine vessels were all capable of a through passage from Shanghai to Chongqing and appear in this list as DFH nos 31 to 38 and no. 52, formerly the V.I.P. steamer JIANG XIA (II).

The construction of new ships for the Yangtse greatly increased during and after the Deng period, including ships of a hitherto unprecedented 5000 gross tons. The latter vessels were known as the DONG FANG HONG 11 class and appear in this list as DFH nos 11 to 30 and JIANG HANs 19 and 20.

Branch allocations for vessels with three digits were DFH 1-- (Chongqing Branch), DFH 2-- (Wuhan Branch), DFH 3-- (Wuhu Branch) and DFH 4-- (Shanghai Branch).

On 1/7/84 a new executive order advised that all DONG FANG HONG vessels were to be renamed with names beginning with JIANG SHEN 江申 (Shanghai Branch) JIANG WU 江芜 (Wuhu Branch), JIANG HAN 江汉 (Wuhan Branch) and JIANG YU 江渝 (Chongqing Branch). These vessels are listed below according to their original DFH number where known. Vessels for which the DFH number is not known, or which were built after 1/7/84, follow at the end.

[The DONG FANG HONG numbers DFH 1 to 10 were used for large pre-existing steamers on the daily Shanghai-Wuhan service and are covered in detail in a separate list of pre-existing steamers. Other known pre-existing vessels such as DFH 61-64 and DFH 402-406 are also covered in the separate list.]

DONG FANG HONG (no number)

757 grt, officially listed as having been built in 1954 by Kiangnan Shipyard, Shanghai as CHIANG HSIA (pingyin JIANG XIA). We believe this vessel is a reconstruction from the wreck of MIN CHU 643/25 sunk in fresh water in 1943 and accordingly. full details are given in the Part 1 list.



DONG FANG HONG (coll. SK)

By DONG FANG HONG number, from DFH 11

11 5050/75 Shanghai Shipyard 15/9/73 keel laid, 16/11/73 launched, 26/12/74 completed, 27/1/75 maiden voyage to Wuhan. 1/7/84 r. JIANG HAN 1. NFI.



DONG FANG HONG 11 arriving Wuhan 30/1/75. Further illustration at DONG FANG HONG 31.

12 5050/75 r. JIANG HAN 2



DFH 12 (and the preceding DFH 11) had a rounded, fully enclosed bridge. In later vessels of this class the bridge plating was slab-sided, and there were small wing openings.



JIANG HAN 2 ex DFH 12

Ships of China

13 5050/76 r. JIANG HAN 3



JIAN HAN 3 soon after renaming (Furukawa).



JIANG HAN 3 at Hankou (c/- Donald Anderson).

14 5050/76 r. JIANG HAN 4 Built by Shanghai Dockyard.



DONG FANG HONG 14 (Alan Lee).



15 5050/77 r. JIANG HAN 5



At Shanghai 12/10/83 (Leroy W. Demery Jr. [@Flickr](#)).



DFH 15 (Donald Anderson 8/84).



16 5050/77 r. JIANG HAN 6



Putong 17/5/87 (Ships of the World 9/87).



JIANG HAN 6 (Markus Berger 3/95).

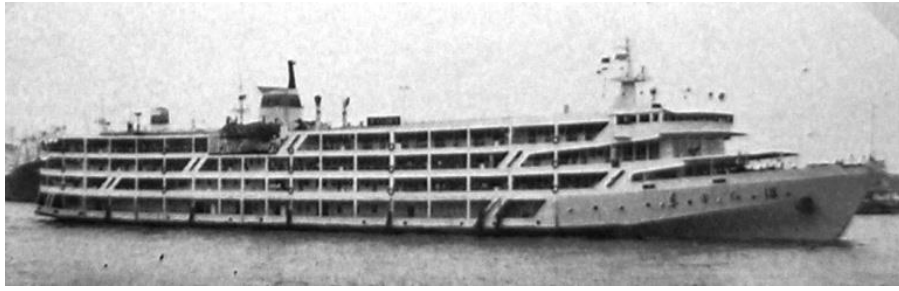
17 5050/78 r. JIANG SHEN 1 Built by Shanghai Dockyard.



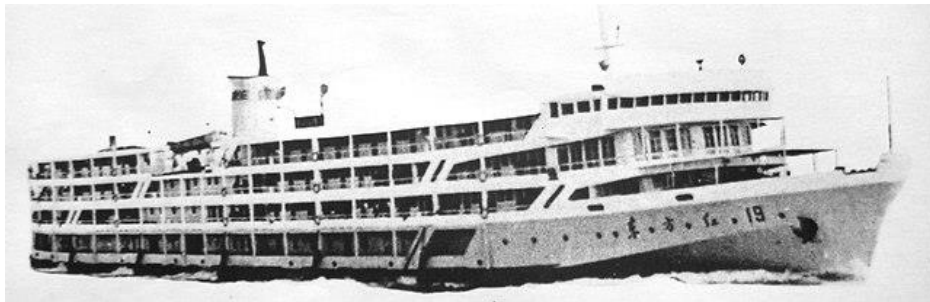
18 5050/78 r. JIANG SHEN 2



At Wuhan 16 August 1980 (Klaus Liphard).



19 5050/78 r. JIANG SHEN 3 Built by Changjiang Shipping Corp. Qingshan Dockyard. Also quoted in Ships of China as built by Shanghai Dockyard.



DONG FANG HONG 19 (*Ships of China*).

20 5050/79 r. JIANG SHEN 4 Built by Shanghai Dockyard.



DONG FANG HONG 20 (*kongfz.com*).



DONG FANG HONG 20



JIANG SHEN 4 (*Ships of China*).



DONG FANG HONG 20 in 1982-83 (Chris Mackey).



JIANG SHEN 4



21 5050/79 r. JIANG SHEN 5



(7788.com).



DONG FANG HONG 21 in 1982-83 (Chris Mackey).



DFH 21 Shanghai 8/10/83 (Leroy W. Demery Jr. @Flickr).

22 5050/79 r. JIANG SHEN 6



DONG FANG HONG 22 (Graham Thompson).





Partially demolished JIANG SHEN 6 (coll. Markus Berger).



Ex JIANG SHEN 6 ex DONG FANG HONG 22 Photo Lakhtikov Dmitriy 26/11/11.

23 5050/80 r. JIANG SHEN 7



JIANG SHEN 7

24 5050/80 r. JIANG HAN 7



DONG FANG HONG 24 (Alan Lee).



25 5050/80 r. JIANG SHEN 8



DONG FANG HONG 25 (Alan Lee).



JIANG SHEN 8 (SK*).

26 5050/81 r. JIANG HAN 8



At Shanghai 1/10/83 (Leroy W. Demery Jr. @Flickr).

27 5050/84 r. JIANG HAN 15





JIANG HAN 15 (7788.com).

28 5050/84 r. JIANG HAN 16



DONG FANG HONG 28 (Donald Anderson 8/84)



JIANG HAN 16. Forward sloping stanchions have been solidified.

29 5050/84 Built Shanghai S.Y. 7/84 r. JIANG HAN 17



JIANG HAN 17 Forward sloping stanchions have been solidified (7788.com).

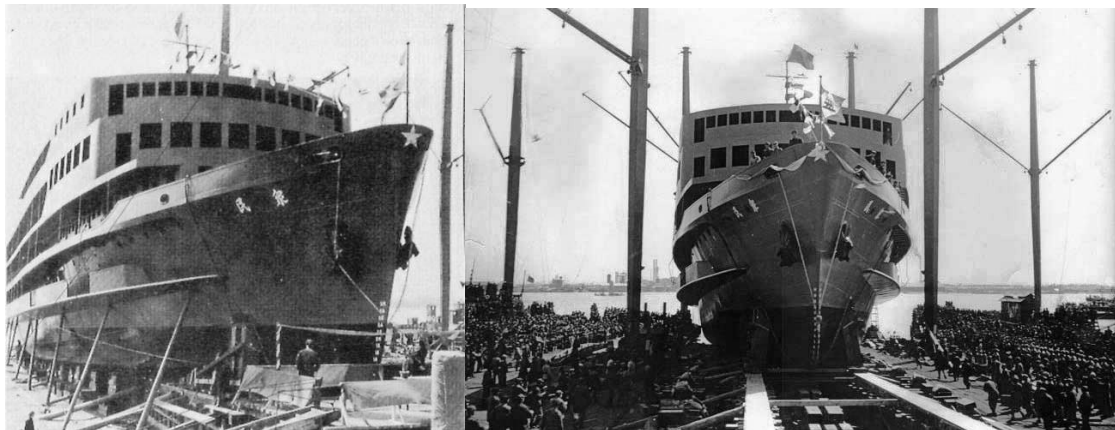


JIANG HAN 17 (Ville de Tanya).

30 5050/84 r. JIANG HAN 18

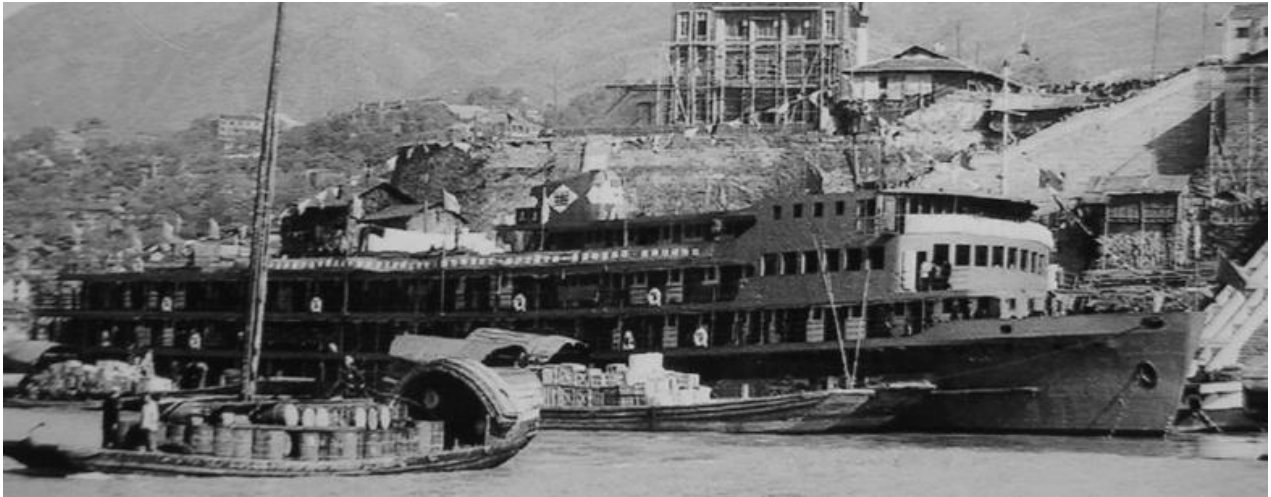


31 ex MIN ZHONG (MIN CHUNG) 民众 Built Kiangnan 1954, 1540 displ. Subsequently lengthened, 2999g, 986 pass. 7/84 r. JIANG HAN 14





MIN CHUNG at Chongqing (7788.com).



MIN CHUNG at Chongqing on maiden voyage (SK*).



Lengthened DONG FAN HONG 31, extended upper deck



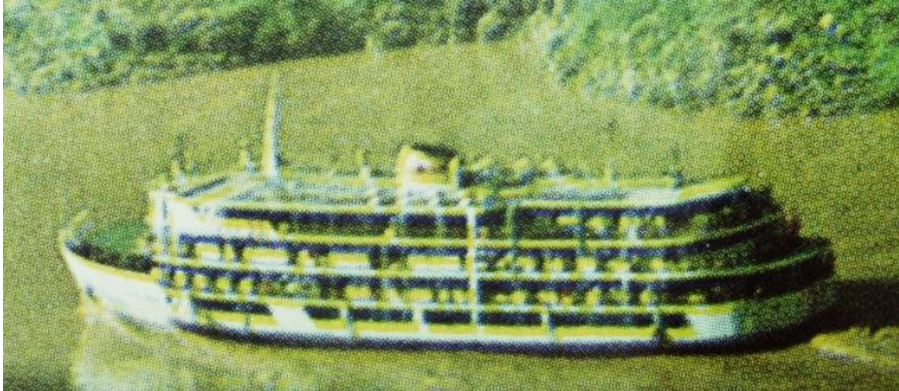
Cream-painted DONG FANG HONG 31 moored outside of DONG FANG HONG 11 at Hankou district of Wuhan in front of tall customs tower on 16 August 1980 (Klaus Liphard).



Postcard overprinted JIANG HAN 14

32 2314/58 682 pass ex JIANG JIN 江津. 1/7/80 boarded by Deng Xiao-ping for Yangtze inspection tour. 7/84 r. JIANG HAN 50





Evident refitted DONG FANG HONG 32 with stronger deck bracing



DONG FANG HONG 32 at Chongqing 8/84 (Donald Anderson)



JIANG HAN 50

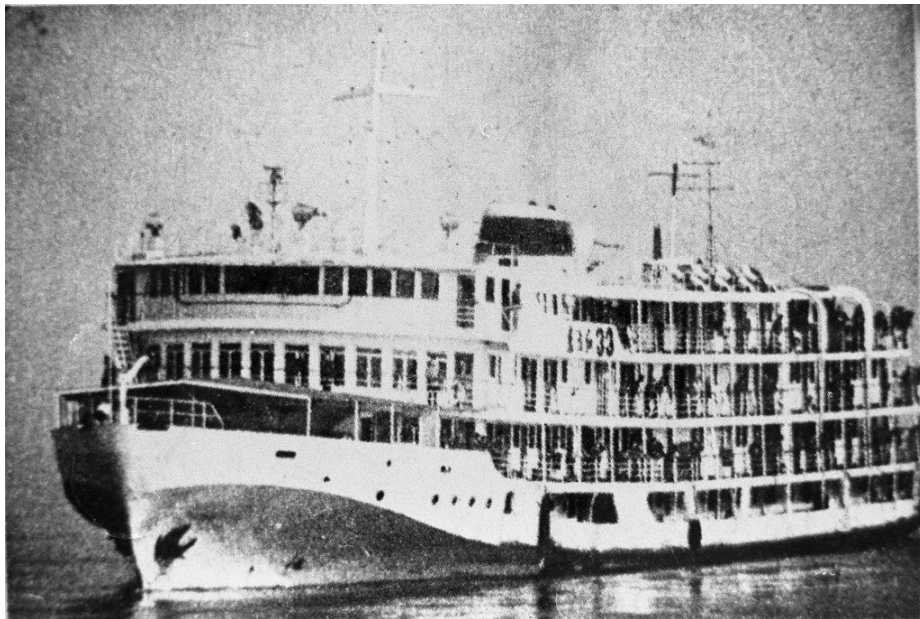
33 Built Kiangnan 1958. ex JIANG RONG 江蓉 Conv. roro r. JIANG HAO 江浩



JIANG RONG (*Ships of China*).



Probable JIANG RONG



DONG FANG HONG 33 (Alan Lee).



34 2314/58 821 pass ex JIANG LING 江陵 7/84 r. JIANG HAN 51
Built Kiangnan. Akaiwa identifies DFH 51 as a 3377/85 vessel of the DFH 53 class. Perhaps DFH 34 became JIANG HAN 51, but as an old ship was unsatisfactory and soon replaced by a younger

fleetmate more suited to the other JIANG HANs.



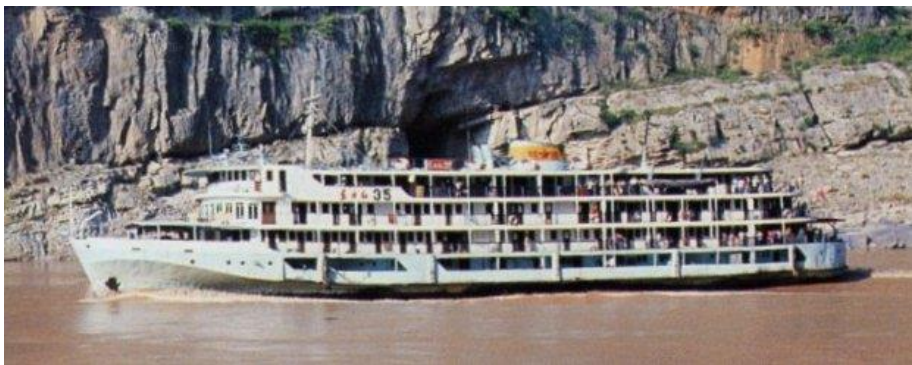
Probable JIANG LING, mast folded





DONG FANG HONG 34

35 2314/59 794 pass ex JIANG HU 江沪 r. JIANG HAN 52



DONG FANG HONG 35



JIANG HAN 52

36 2314/60 682 pass ex JIANG YIN 江阴 r. JIANG HAN 53



JIAN HAN 53

37 2314/68 712 pass ex JIANG YANG 江阳 r. JIANG HAN 54



DONG FANG HONG 37 at Hanhsien (*China Reconstructs* 10/69 p.25).



JIANG HAN 54



JIANG HAN 54

38 2807/72 954 pass Built by Changjiang Shipping Corp. Qingshan Dockyard. First large DFH built as such. Earliest example of multiple sloping stanchions, but not on upper decks. r. JIANG HAN 55.





JIANG HAN 55



JIANG HAN 55 arriving Shanghai on 21/10/2000. Last known sighting of one of the eight large mainline river steamers built during the Mao era (SK*).

39 2940/78 800 pass r. JIANG YU 1.

Capsized at Liuziliang. Scrapped 9/02.





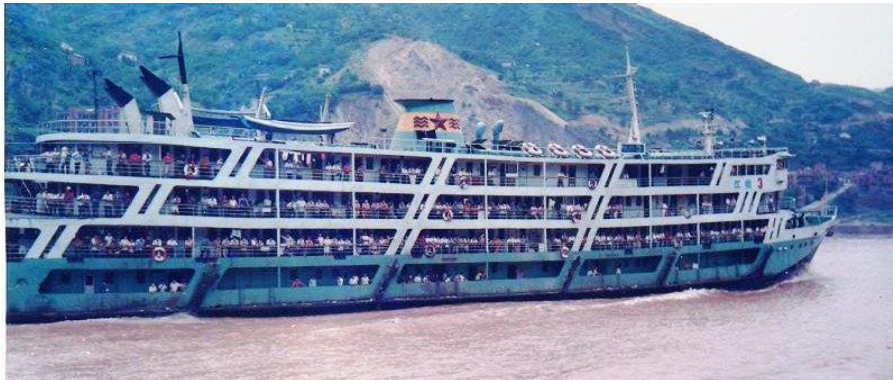
JIANG YU 1 at Chongqing in 1981



40 2940/79 782 pass III/80 used as location for feature film "Evening Rain". Renamed JIANG YU 2



41 2940/81 800 pass r JIANG YU 3



42 2940/79 800 pass r. JIANG YU 4



JIANG YU 4 at Chongqing in 1981



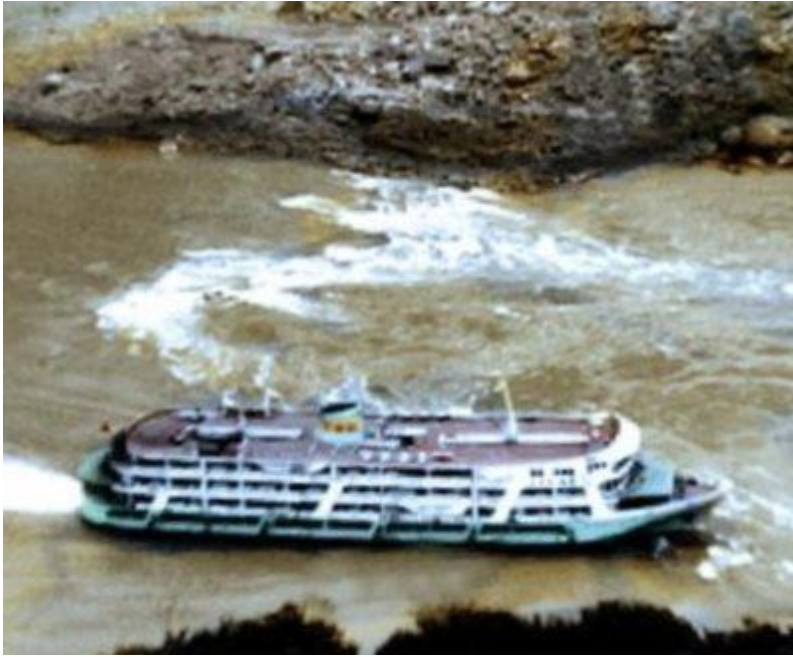
43 2940/79 800 pass r. JIANG YU 5



At Shanghai (Furukawa).



44 2940/79 800 pass r. JIANG YU 6



45 2940/80 800 pass r. JIANG YU 7



DONG FANG HONG 45 (Donald Anderson 8/84

46 2940/77 782 pass First ship from Wuchang shipyard, 27/9/77 completed trials. R. JIANG YU 8.



47 2940/77 782 pass r JIANG YU 9



48 2940/77 800 pass r. JIANG YU 10





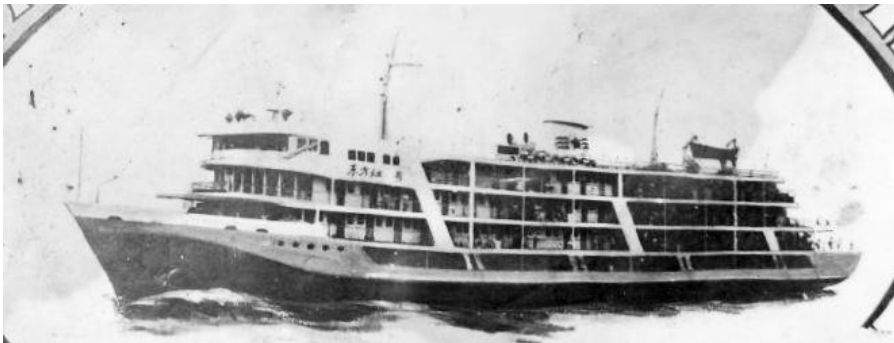
49 2940/77 800 pass r. JIANG YU 11



50 2940/80 800 pass r. JIANG YU 12



DONG FANG HONG 50 (Alan Lee).



DONG FANG HONG 50 or 51

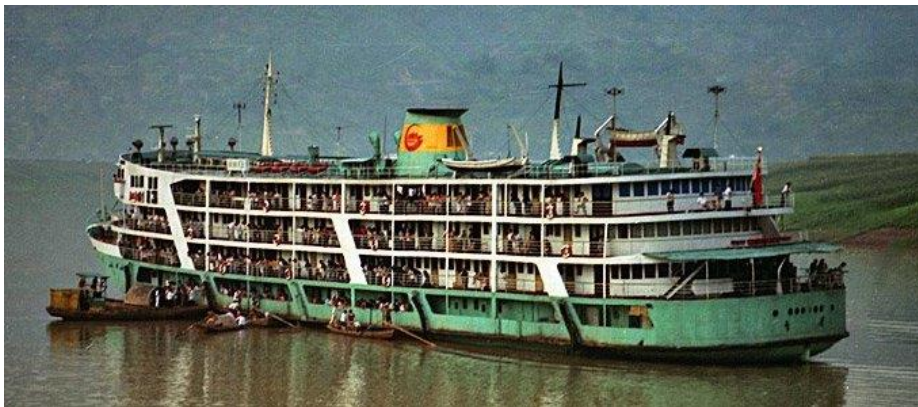


JIANG YU 12 at Shanghai 29 April 2002 (SK*).

51 2940/80 800 pass r. JIANG YU 13



DFH51 entering the new Ghezouba II Lock on 15/6/81 (Xinhua).



JIANG YU 13



JIANG YU 13

52 2675/75 728 pass ex JIANG XIA (II). Later r. JIANG HAN 56.

[On 20/3/75 the State Council approved the construction at the Changhang Qingshan Shipyard of a new, enlarged version of JIANG XIA that Chairman Mao had repeatedly used. 80x6.9x2.4 m., 757pass, 306 t. of cargo, 2 x 1320 h.p. The appearance was very similar to the original JIANG XIA. On 30/1/79 JIANG XIA (II) was sunk in collision with DONG FANG HONG 8 in the Caoxie narrows at Nanjing, but subsequently r. DONG FANG HONG 52 and then JIANG HAN 56.]





JIANG XIA (II)/DFH 52 with extended upper deck

53 3377/84 821 pass r. JIANG HAN 57 to Chongqing Bureau r. JIANG YU 22



JIANG HAN 57 ex DONG FANG HONG 53



JIANG YU 22 orig. DONG FANG HONG 53 at Shanghai 28 April 2002 (SK*).

54 3377/84 821 pass r. JIANG YU 14



55 3377/85 821 pass r. JIANG YU 15 conv. to car carrier JIANG YU (no number).



56 3377/85 833 pass r. JIANG YU 16



57 3377/85 833 pass r. JIANG YU 17 conv. to cruise ship r. JIANG SHAN 9





JIANG YU 17 at Shanghai (SK*).



JIANG SHAN 9

Note: We are not aware of any DONG FANG HONG vessels with numbers between 65 and 100.

101 694displ/58, 762 pass to 1451 pass, 100 tons of cargo 66.9x10m 2xRBDV 400-horsepower diesel engines. Design speed 23 km/h

Built 1958 at Kiangnan Dockyard as JIANG DU 江都. 8/66 r. DONG FENG 1 东风 1. 12/66 r. DONG FANG HONG 101. 1984 r. JIANG YU 101 江渝 101, b/u same year.



DONG FANG HONG 101 as JIANG DU



113 Not listed by Akaiwa



DONG FANG HONG 113 (Alan Lee).

117 Catamaran type. Not listed by Akaiwa





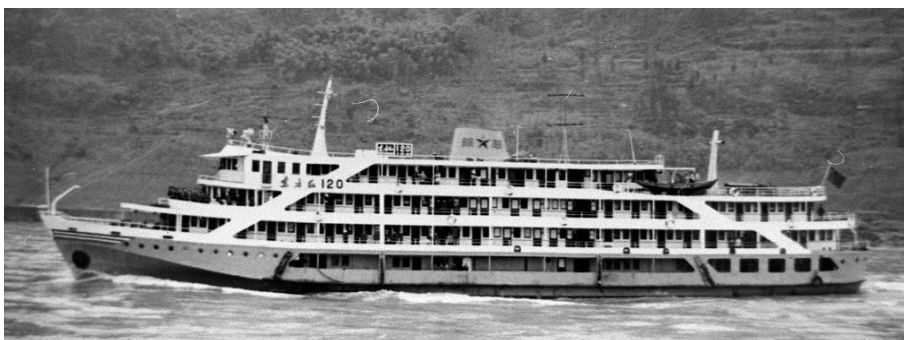
DONG FANG HONG 117 (both Alan Lee).

118 277/72 400 pass r. JIANG YU 103

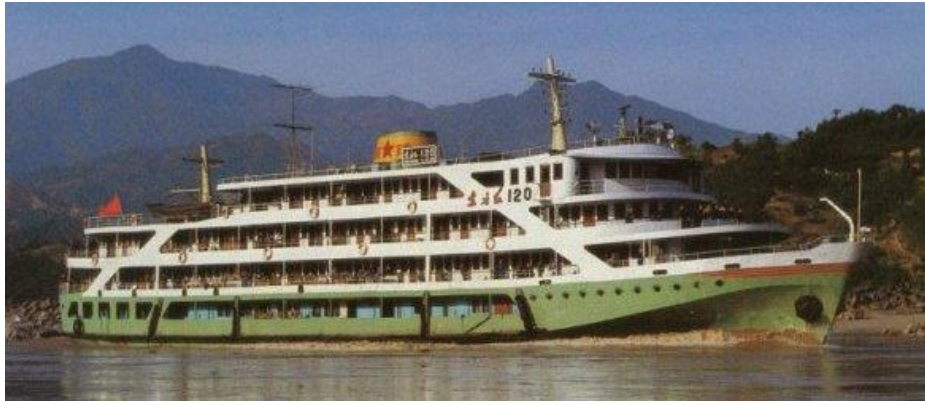
119 1620/74 800 pass r. JIANG YU 106



120 1620/76 798 pass r. JIANG YU 107



DONG FANG HONG 120 (Alan Lee).





DONG FANG HONG 120 (Alan Lee colln).

121 1620/77 732 pass r. JIANG YU 108



DONG FANG HONG 121 at Chongqing (C/- Donald Anderson).



Lower: number indistinct but thought to be 121

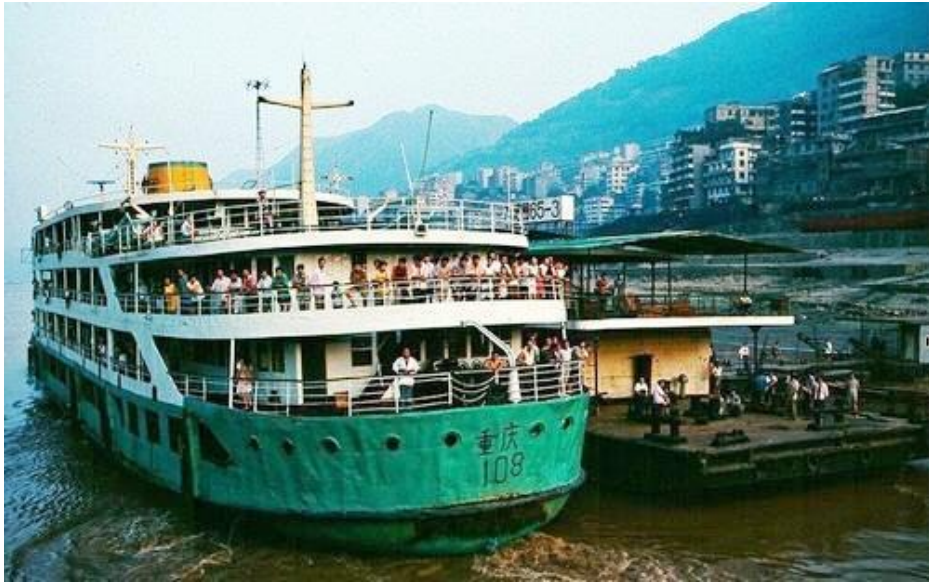


122 1620/77 732 pass r. JIANG YU 109



August 1980 (Klaus Liphard).





JIANG YU 109 at Chongqing in 1994 (Internet).

123 1620/78 554 pass r. JIANG YU 110



August 1980 (Klaus Liphard).





124 1620/79 554 pass r. JIANG YU 111.



DONG FANG HONG 124 (Alan Lee).





DONG FANG HONG 124 (Donald Anderson 8/84).



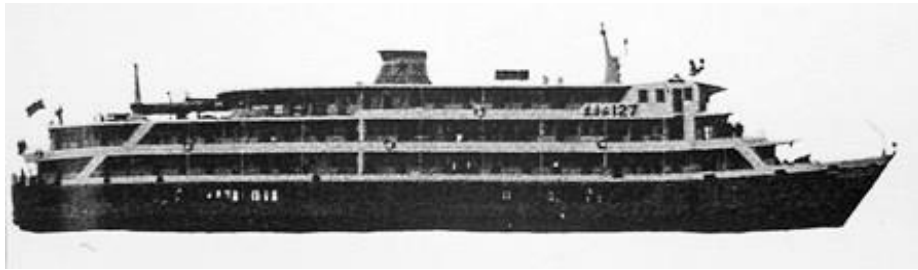
125 283/78 400 pass r. JIANG YU 104



Unidentified, but possibly 283 ton DFH 125 class

126 283/78 400 pass r. JIANG YU 105

127 1830/83 689 pass Dongfeng Shipyard r. JIANG YU 112 later cruise ship JIANG SHAN 6?



DONG FANG HONG 127 (*Ships of China*).

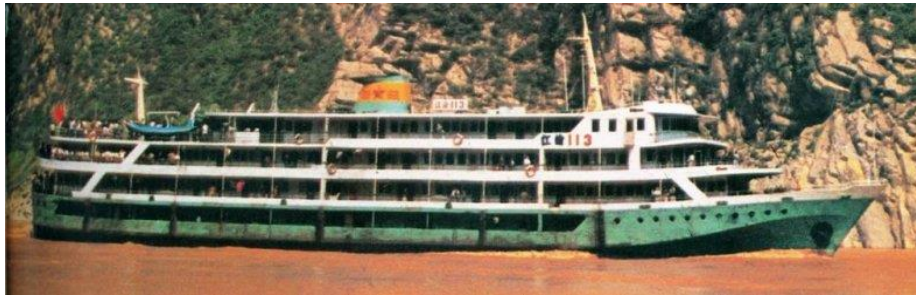


DONG FANG HONG 127 (Alan Lee).



Cruise ship JIANG SHAN 6 at Shanghai 1/5/02, consistent with conversion of JIANG YU 113-117 SK*

128 1830/84 608 pass r. JIANG YU 113



JIANG YU 113 (R.) and 114 (L.) at Chongqing shipyard 8/84 (Donald Anderson).

129 1830/84 608 pass r. JIANG YU 114



JIANG YU 114 evidently under construction at Chongqing (Donald Anderson 8/84).



201 331/58 606 pass r. JIANG HAN 101

203 331/57 597 pass r. JIANG HAN 102

204 331/58 602 pass r. JIANG HAN 103

206 331/57 597 pass r. JIANG HAN 105

207 608/67 787 pass r. JIANG HAN 106

219 608/76 700 pass r. JIANG HAN 107

233 GRT unknown/67 blt. Hudong ex JIANG YUAN 江源 853 pass 67.4x11m steamship 1200 shp



DONG FANG HONG 233 moored upstream of Wuhan 8/84 (Donald Anderson).

238 GRT unknown/60 wooden hull ex TONG SHAN 1 通山 1 120 pass 21.85x4.5m 98bhp

247 608/71 700 pass r. JIANG HAN 108



DONG FANG HONG 247 (Donald Anderson 8/84).

248 608/72 700 pass r. JIANG HAN 109

249 608/72 700 pass r. JIANG HAN 110

250 608/72 700 pass r. JIANG HAN 111

251 608/72 700 pass r. JIANG HAN 112

252 608/73 700 pass r. JIANG HAN 113

253 608/73 700 pass r. JIANG HAN 114

254 608/73 hull of pre-stressed concrete 53x8.6x3 700 pass r. JIANG HAN 115



DONG FANG HONG 254

256 608/73 700 pass r. JIANG HAN 115



Variant 608 ton type?

257 608/74 700 pass r. JIANG HAN 116

259 1138/77 500 pass r. JIANG HAN 122

260 1138/78 500 pass r. JIANG HAN 123



261 1138/78 500 pass r. JIANG HAN 124



JIANG HAN 124

264 608/78 700 pass r. JIANG HAN 117

265 608/79 700 pass r. JIANG HAN 118

266 1656/82 833 pass r. JIANG HAN 119



267 1656/82 833 pass r. JIANG HAN 120

268 1656/82 833 pass r. JIANG HAN 121



DONG FANG HONG 268 (Alan Lee).

269 1660/84 833 pass r. JIANG HAN 128
(no photo available)

270 1660/84 833 pass r. JIANG HAN 129



DONG FANG HONG 270 (Donald Anderson 8/84).

271 122/83 250 pass r. JIANG HAN 126

272 122/83 250 pass r. JIANG HAN 127

273 1079/86 721 pass r. JIANG HAN 132

274 1660/86 833 pass r. JIANG HAN 130
(no photo available)

275 1660/88 833 pass r. JIANG HAN 131



316 184/60 65 pass 24.8x6m wooden hull, diesel ex CHANG HE 長河

319 332/50 65 pass 26x5.5m wooden hull diesel ex HSIN'I / XIN YI 新宜

322 81/71 240 pass r. JIANG WU 104

323 81/71 240 pass r. JIANG WU 105

324 608/70 700 pass r. JIANG WU 114

325 608/70 700 pass r. JIANG WU 115

326 608/71 700 pass r. JIANG WU 116

327 608/71 700 pass r. JIANG WU 117

328 608/73 700 pass r. JIANG WU 118

329 608/75 700 pass r. JIANG WU 119

330 608/75 700 pass r. JIANG WU 120

331 608/75 700 pass r. JIANG WU 121



DONG FANG HONG 331 (7788.com).

332 608/76 700 pass r. JIANG WU 122

333 608/73 700 pass r. JIANG WU 123

336 152/78 324 pass r. JIANG WU 135

337 152/78 324 pass r. JIANG WU 106

338 152/78 324 pass r. JIANG WU 107

340 608/78 700 pass r. JIANG WU 124

341 608/78 700 pass r. JIANG WU 125

342 608/79 700 pass r. JIANG WU 126

343 152/78 324 pass r. JIANG WU 108

344 152/78 324 pass r. JIANG WU 109

345 152/79 324 pass r. JIANG WU 110

346 152/80 324 pass r. JIANG WU 111

347 152/80 324 pass r. JIANG WU 112

348 152/80 323 pass r. JIANG WU 113

349 608/79 700 pass r. JIANG WU 127

351 608/79 700 pass r. JIANG WU 128

352 1660/83 732 pass r. JIANG WU 129



DONG FANG HONG 352

353 1660/84 732 pass r. JIANG WU 130
(no photo available)

356 1768/85 732 pass r. JIANG WU 131
(no photo available)

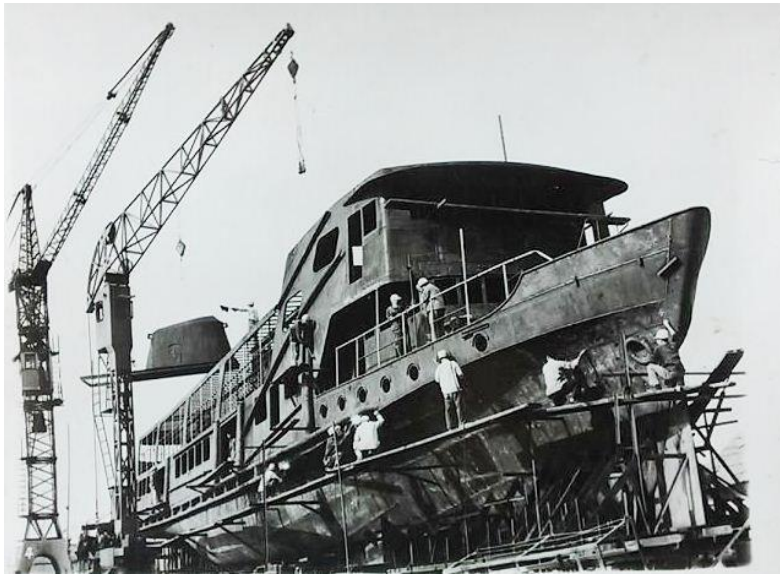
357 1768/86 732 pass r. JIANG WU 132
(no photo available)

401 245net tons 1230 pass, steamship 1100 shp. Listed by Changjiang National Shipping Corp. 1976-1977 history as having been built in 1964 by Zhonghua Shipyard, Shanghai as SHIN CHUNG (pingyin XIN ZHONG). We believe this vessel is a reconstruction from MING SHIN (pingyin MIN XIN, 2868/05) which 27/12/49 on a voyage Shanghai/Hankow was bombed and set on fire by Nationalist aircraft – 29/12 fire extinguished. 5/4/50 refloated. Accordingly full details are given in the Part 1 list.



August 1984 DONG FANG HONG 401, last steam-powered Yangtse passenger vessel working out of Shanghai (Donald Anderson).

410 1033/70 805 pass, 62.5x10.4m 856 bhp r. JIANG SHEN 103

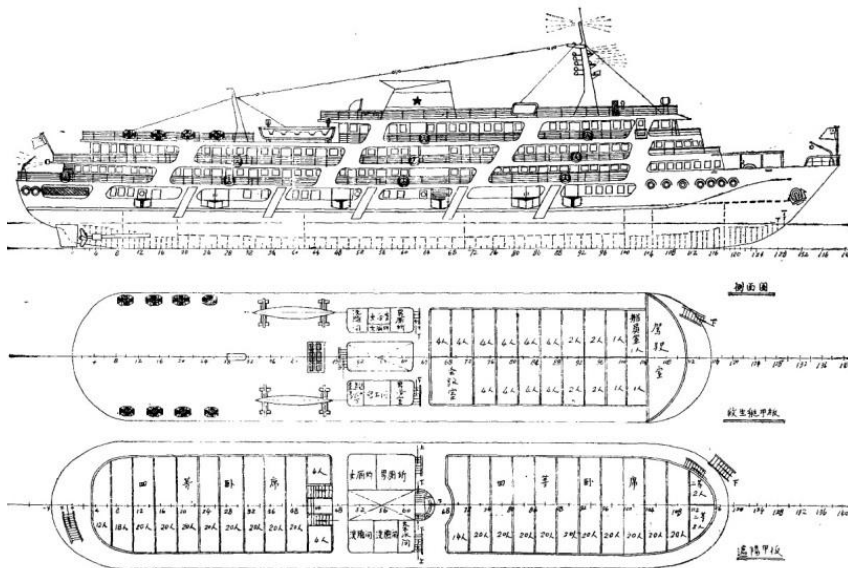
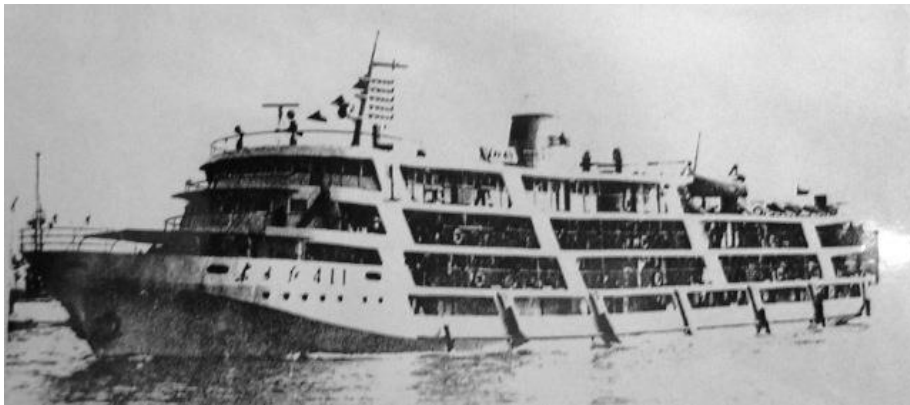


DFH 410 or a sister under construction (7788.com).





411 2130/78 1194 pass pass r. JIANG SHEN 107
 Also reported as blt 1976, 1226 pass 82.8x13.3m



Bow plating and funnel actually built higher than in this line drawing

412 608/74 532 pass/589 pass r. JIANG SHEN 104

414 608/74 532 pass 428 bhp 45.5x8.2m r. JIANG SHEN 105

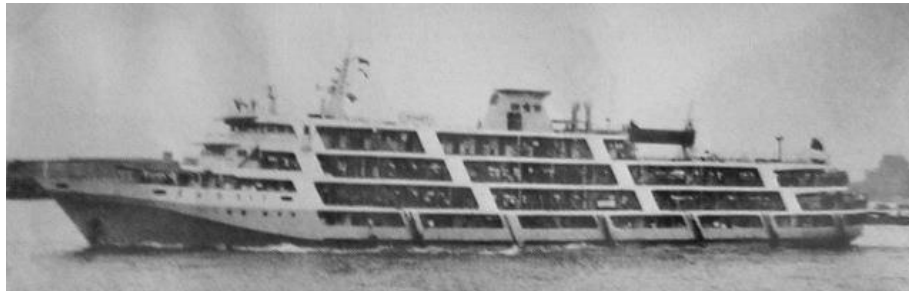
415 608/74 589 pass 428 bhp 45.5x8.2m

416 608/76 532 pass/589 pass 428 bhp 45.5x8.2m r. JIANG SHEN 106



Improved 608 ton type?

417 2130/78 1194 pass r. JIANG SHEN 108



JIANG SHEN 108 with extended upper deck

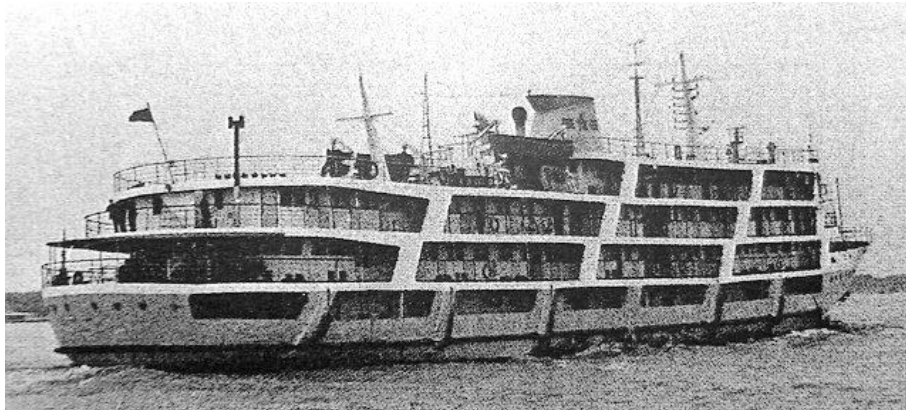
418 2130/80 1194 pass r. JIANG SHEN 109



DONG FANG HONG 418 (Alan Lee).



DONG FANG HONG 418 in 1982-83 (Chris Mackey).



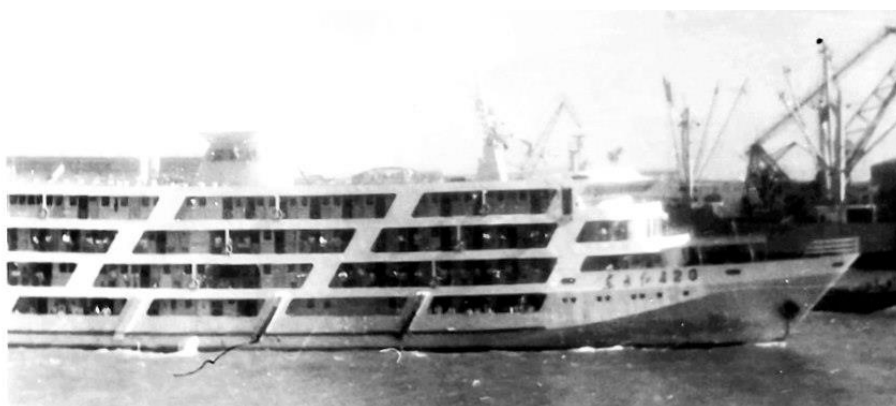
JIANG SHEN 109 in Wuhan/Shanghai service (*Ships of China*).

419 2130/81 1213 pass r. JIANG SHEN 110



DONG FANG HONG 419 (Chris Mackey).

420 2130/82 2130 pass r. JIANG SHEN 111



DONG FANG HONG 420 (7788.com).

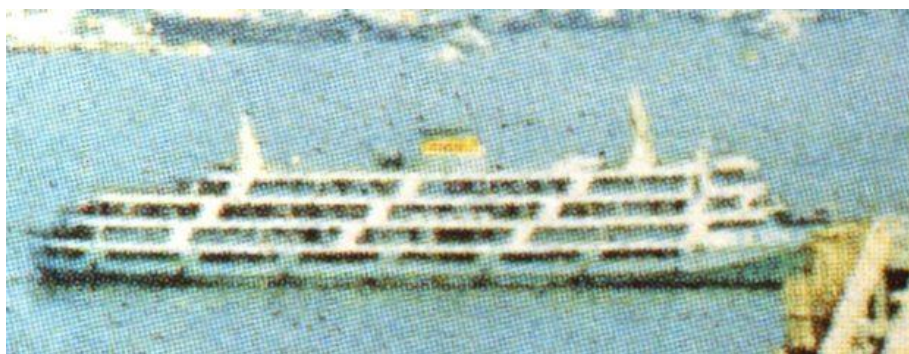


Freshly renamed JIANG SHENG 111 (Donald Anderson 8/84).

421 2130/83 2130 pass r. JIANG SHEN 112



JIANG SHEN 112 (Chris Mackey CM1-0937).



Unidentified variant DFH 419-423 at Shanghai

422 2130/83 2130 pass r. JIANG SHEN 113

[No photo available]

423 2193/83 2293 pass r. JIANG SHEN 114



424 3777/86 1618 pass r. JIANG SHEN 115





425 3777/87 1618 pass r. JIANG SHEN 116



JIANG SHEN 116 at Putong 17/5/87 (*Ships of the World* 9/87).





JIANG SHEN 116 (Markus Berger).

Follow-on from DFH 30

JIANG HAN 1-18: Names were set aside for the first 18 ships of the DFH 11 class (q.v.), but not all were used.

JIANG HAN 19 5050/86 Qingshan Shipyard 1390 pass. 2004 sold to Fuyang city in Hangzhou Bay. Moored in Fuchun River, fitted out as dining and entertainment resort WUCHANG, opened 1/1/05. Forward sloping stanchions are solidified.





JIANG HAN 20 5050/88 1390 pass



Forward sloping stanchions are solidified.

JIANG HAN follow on from DFH 57

JIANG HAN 51 3377/85 821 pass conv. roro r. 江浩



Akaiwa says ex DFH 31 but vessel in photo clearly has no connection to 1950s-built DFH 31. Consistent with DFH 53-57, JIANG HAN 59-63, and JIANG YU 18-24.

JIANG HAN 59 3377/86 821 pass Fire damage, conv. roro r. JIANG HUNG/HONG/HOONG 江鸿



JIANG HAN 59 at Shanghai (SK*).



JIANG HAN 59 at Shanghai (SK*).



JIANG HUNG ex JIANG HAN 59

JIANG HAN 60 3377/87 821 pass Damaged by fire in 1997 following serious collision in Wuhan. B/u?
[No photo available]

JIANG HAN 61 3377/87 821 pass r. JIANG YU 23 conv. cruise ship r. JIANG SHAN 7 江山 7



JIANG SHAN 7 orig. JIANG HAN 61

JIANG HAN 62 3377/89? 821 pass conv. roro r. JIANG AN 江安





Car carrier JIANG AN ex JIANG HAN 62

JIANG HAN 63 3377/88 821 pass r. JIANG YU 24 conv. 5 decker cruise ship r. JIANG SHAN 8 江山 8



JIANG HAN 133 1079/86 721 pass Built as such.



JIANG HAN 133 (*Ships of China*).

JIANG HAN 134 1079/87 721 pass Built as such.
(no photo available)

other vessels built as JIANG SHEN

JIANG SHEN 21 Not in Akaiwa. 5 decker. Comparable to conversion of JIANG HAN 63.



JIANG SHEN 117 3777/87 1618 pass



JIANG SHEN 117 at Shanghai (Markus Berger).



JIANG SHEN 117 at Shanghai, 1995-6 (coll. Graham Thompson).



JIANG SHEN 117 at Shanghai (SK*).

JIANG SHEN 118 3773/88 1618 pass



JIANG SHEN 118 at Shanghai 4/03 (SK*).

Other JIANG WU vessels

JIANG WU 13 Not in Akaiwa



JIANG WU 133 1768/86 732 pass Built as such.

[No photo available]

JIANG WU 134 1768/86 732 pass Built as such.



JIANG WU 134 (r.) and unidentified identical sister

JIANG WU 136 608/80 700 pass ex-WU AN.

JIANG YU follow on from DFH 57

JIANG YU 18 3377/87 855 pass



August 1887



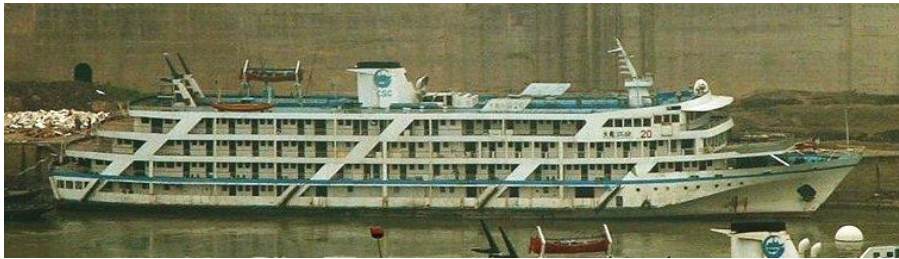
JIANG YU 18 at Shanghai April 2002 (SK*).

JIANG YU 19 3377/87 855 pass, later 994 pass r. JIANG SHAN 19. 3/08 conv. by Mei Jiang Yu Shipyard to roro JIANG PING.





JIANG YU 20 3377/88 879 pass



JIANG YU 21 3377/8(8?) Not in Akaiwa



JIANG YU 22 3377/8(9?) Not in Akaiwa



JIANG YUs 14, 22 and 16

JIANG YU 23 3377/8(9?) Not in Akaiwa



JIANG YU 24 3377/90(?) Not in Akaiwa



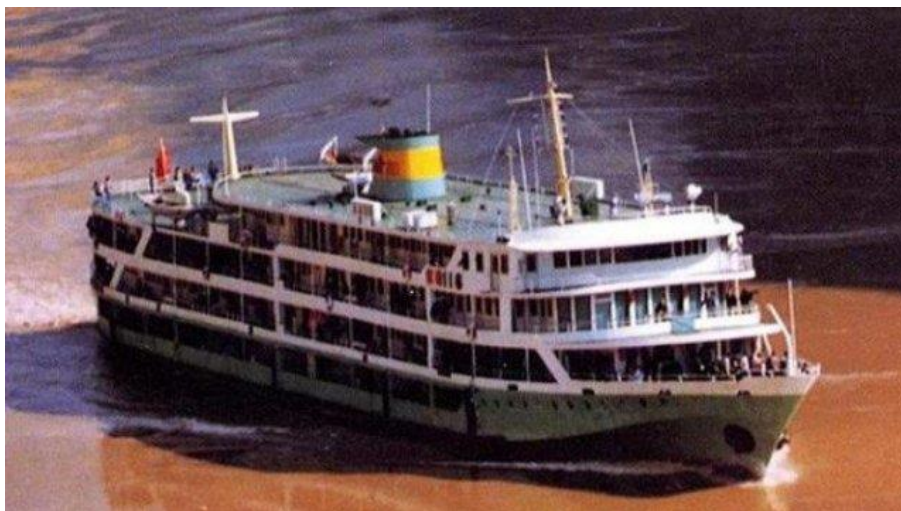
Other vessels built as JIANG YU

JIANG YU 102 868/70 758 pass r. JIANG HAN 135

JIANG YU 115 1830/85 608 pass



JIANG YU 116 1830/85 608 pass



JIANG YU 117 1830/90(?) 608 pass

[No photo available]

JIANG YU 118 r. JIANG SHAN 5.



Beached at Chongqing (five photos Ville de Tanya:

<http://m13585591914.blog.163.com/album/#m=2&aid=296288271&pid=9400349392>).

1960s JIANG vessel(s) for which DONG FANG HONG number is unknown

JIANG CHU, steamship, 3/60 mentioned in *China Reconstructs*.

JIANG DONG 江東 1390dw/66 900 pass 14.5k Built by Shanghai Dockyard. Reconstruction?



Launch of an unidentified early vessel (coll. SK).

Notes on DONG FANG HONG 11 types

DFH 11-type length 112.8 (105.0 b.p.)x19.6x16.4x3.6 meters. 5050/5450 tons gross, 3700 displ., 450 tons cargo. 1180-1252 passengers, 2 main power plant diesel engines stand-alone 1655 kilowatts, 2xfour leaf aft propellers, 2.45 m. diameter, speed 16.4k

DFH 11-26: 12V300-50B type 1470 kilowatts diesel engine 2, speed 15.66.

DFH 27-30 and presumably also JIANG HAN 19-20: 6E300ZC-1 fuel-efficient diesel engines. External recognition feature: forward sloping stanchions are of solid construction.

DFH 424 r. JIANG SHEN 115, DFH 425 r. JIANG SHEN 116, JIANG SHEN 117, JIANG SHEN 118: comparable to above, but propulsion power reduced by about 103 kilowatts, fuel consumption approximately 37.2 grams / kWh, and able to burn low-grade fuel. Simpler external appearance.

